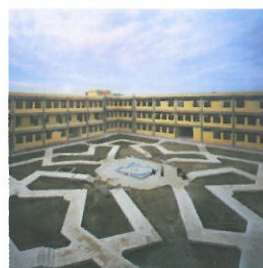
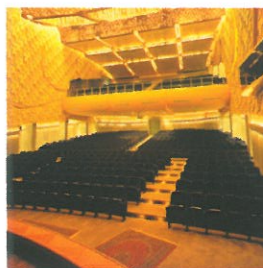
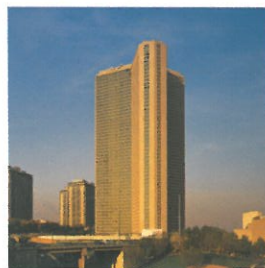
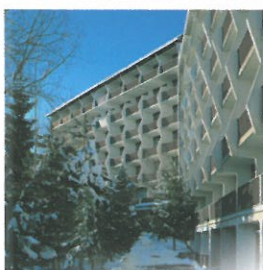
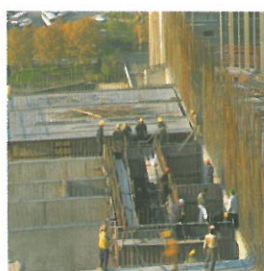


A.S.P.

Construction co. 2016



No.16, Shahid Abbaspour (Tavanir) St., Vali-e-Asr Ave., Tehran - 1434864371- Iran
 Tel : (+9821) 88770852 - 88770777 Fax : (+9821) 88776601
www.asp-co.ir ■ info@asp-co.ir



In the name of Allah

A.S.P Company (founded by Asadi, Soltani, Panahpour) has been active since 1969 undertaking large-scale residential, commercial and office buildings besides other construction projects by employing technical knowledge of consultant engineers, domestic and foreign experts while complying with all scientific and engineering rules and regulations. The company continues its activity by performing large-scale civil engineering projects with over 45 years of experience.

Our mission is to offer the best engineering services in the form of Management Contract (MC), EPC (Engineering, Procurement and Construction), EPCF (Engineering, Procurement, Construction and Finance), and BOT (Build, Operate, Transfer), especially in high-rise buildings and large-scale construction projects.

A.S.P has always been loyal to its shareholders and thoughtful regarding high interests capital as long term investments. Furthermore, as a contractor, A.S.P offers its services with best quality in shortest possible time, as well as implementing exacting HSE practices, following technical and engineering procedures and optimal usage of available resources.

Expertized and professional personnel alongside high tech and advanced machineries and facilities made A.S.P Co. highly capable at undertaking exceptional modern domestic and global projects.

In a new chapter of board members' activities and after joining Iranian OTC market in June 2011 with 200 billion IR Rials registered capital –which subsequently increased by 300% capital to 800 billion IR Rials on February 2015- A.S.P is trying to maintain its effective influence over construction field by its commitment, expertise of personnel and all its capabilities.

Board of Directors
A.S.P Co.



Introduction:

A.S.P Co. (Public Joint Stock) has started its activity since 1969 by performing large-scale residential, office spaces, commercial, etc. projects by using technical knowledge of consulting engineers, domestic and foreign experts as well as complying with all scientific and engineering rules and regulations. This company has been continuously leading gigantic building construction projects in the country using its precious 45 years of experience.

Mission of A.S.P Company is to offer services such as General promoting Contracts (GC), Managing Contracts (MC), EPC and EPCF; specifically in large-scale construction projects.

A.S.P is able to undertake complicated structural and civil projects using its professional and expertized personnel alongside advanced machineries. Until now, this company has successfully executed over 1,000,000 m² Construction area with highest quality, also 500,000 m² construction area is under construction with its superior capability.

This company has always been loyal to protect its shareholders' investments and constantly providing services to its Clients in shortest possible time frame as well as implementing technical and engineering standard rules and regulations, safety and best possible use of available company resources are its missions.

Engineering, Execution, Personnel and Equipment capabilities as well as valuable Executive Experiences made this company capable of undertaking high-quality constructional cooperation projects of Iran.

A.S.P is senior member of Iranian large-scale constructors; member of Iran Construction Companies Syndicate, Iran Energy Conservation Society (IECS), Iranian Concrete Institute, Iranian Institute of Certified Structural Engineers, Iran Technical and Engineering Services Exporters Association; also possesses 1st grade in construction and building field, 1st grade in installation and equipment and 3rd grade in roads and transportation field in the country.

Project Management System

Given the intended services of the company, the most important aspect for achieving its goals is to employ standard methodologies of project management. A.S.P takes into account these principles while designing its standards and defining work flows, thus it has managed to implement considerable modifications in order to speed up its performance and optimum use of the resources of the organization during recent years:

- Times management.
- Quality management.
- Procurement management.
- Integration management.
- Human resources management.
- Communications management.
- Scope management.
- Cost management.
- Risk management.

Moreover, this company holds following international standards:

- ISO 9001-2008.
- ISO 10006-2003.
- OHSAS 18001-2007.
- ISO 14001-2004.
- ISO 10002-2004.

Which created a novel management system according to the latest standards at the company.

Quality Objectives

- 1- Loyalty to shareholders' investments and hard work in increase and improve of shares.
- 2- continuous improvement regarding quality of building construction in order to increase customer satisfaction by employing safety, comfort and elegance considerations in designs; additionally keeping and improving the **A.S.P** brand in country's building construction industry by rising knowledge and specialization of company's personnel with comprehensive regular training programs, motivation and encouragement since human resource is the main asset of this company.

Competitive advantage:

- 1- One of the largest construction companies possessing extraordinary background in high-rise structures in the country.
- 2- Beneficiary from active and capable personnel in the field of construction and infrastructure projects.
- 3- Effective capabilities and profitable acts in large-scale construction projects.
- 4- Comprehensive and compulsory activity of company with other holding companies and local and foreign consultant engineers (consulting, execution, supervision and sales).

Available services to contractors

General Contractor (G.C):	General contracting in different types of large-scale and high-rise projects.
Engineering:	Through Joint Venture (J.V) with capable local/global consulting engineers.
Procurement:	With internal commitments and capabilities through local/global resources.
Construction:	With local abilities of the company and powerful promoters.
Finance:	Through local certified branded banking system in Iran.

A.S.P Capabilities

Execution of complicated engineering projects which many of them have been constructed for the first time in the whole country i.e. seismic rehabilitation project which was designed, calculated and observed with skilled capable engineers in Iran.

Successful accomplished execution of supreme high-rise building in Iran (residential: 56 floor with 220,000 m² area) without using overseas personnel at different stages of project e.g. management, engineering, technician, technical worker. Human resource is one of the main superior abilities of this company.

A.S.P is founder of recreational and sports complex as well as villas in sport complex area in northern Tehran named "Shemshak" for the first time, undertaking both design and construction.



List of Construction or Under-Construction projects

Ref. No.	Projects Name	Page No.	Client	Consultant	Location
1	Kooy-e Nobonyad-e Vanak Residential, Office, Commercial Complex A.S.P.	6	A.S.P. Company	Setek Batiman Consulting Engineers Co. (French Company)	Tehran
2	Headquarters of Bank Saderat Iran- Sepehr Tower	9	Bank Saderat Iran	Setek Batiman Consulting Engineers Co. (French Company)	Tehran
3	Shemshak Residential and Sports Complex	14	A.S.P. Co.	Setek Batiman Consulting Engineers Co. (French Company)	Shemshak
4	Ferdowsi Grand Hotel	20	Mr. Pouraziz	Mr. Saghazadeh, Zangeneh, Khorsandi (The Engineering Team)	Tehran
5	Enghelab-e Eslami Telecommunication Complex	21	Telecommunication Company of Iran	Atek Consulting Engineers Co.	Tehran
6	Tehran Municipality Public Services Administration Main Office	22	Tehran Engineering and Civil Organization	Nirsan Consulting Engineers Co.	Tehran
7	Underground Parking of Central Municipality	29	Tehran Engineering and Civil Organization	Nirsan Consulting Engineers Co.	Tehran
8	Fajr Tehran Tools Market	30	Bank Saderat Iran	Mr. Safamanesh and Peyman-e Ghadir Consulting Engineers	Tehran
9	Qolhak office-Commercial Complex	32	A.S.P. Company	Mr. Azmayesh	Tehran
10	Karaj Central Building of Bank Saderat	33	Bank Saderat Iran	Daheh Consulting Engineers Co.	Karaj
11	Power Research Center, Office Building and Amphitheater	34	Power Organization of Iran	Atek Consulting Engineers Co.	Tehran
12	Power Research Center, Chemical and Mechanical Laboratories Complex	40	Power Organization of Iran	Atek Consulting Engineers Co.	Tehran
13	Power Research Center, 60 office units	42	Power Organization of Iran	Technical and Engineering Organization of Ministry of Power	Tehran
14	Power Research Center, Industrial Sheds	43	Power Organization of Iran	Atek Consulting Engineers Co.	Tehran
15	Hosseini Abad Cultural and Sport Complex	44	Bank Saderat Iran	Peyman Ghadir Consulting Engineers Co.	Tehran
16	Nezami Ganjavi Park	45	Engineering and Civil Organization of Municipality -Dist. 6 of Tehran	Peyman Ghadir Consulting Engineers Co.	Tehran
17	Social Security Organization Investment Company Building	46	Iran Sazeh Company	Sinam Consulting Engineers Co.	Tehran
18	Mathematics College of Shahed University	48	Shahed University	Pars Gostareh Consulting Engineers Co.	Tehran
19	Engine House Manhole Canal of Shahed University	49	Shahed University	Pars Gostareh Consulting Engineers Co.	Tehran
20	Nakhl -e Zarin -e Qeshm Commercial, Office Complex	50	Qeshm Civil Company	Peyman Ghadir Consulting Engineers Co.	Hormozgan
21	Semnan Sadaf Office - Commercial Complex	51	Bank Saderat Semnan	Engineering Office of A.S.P. Company	Semnan
22	Excavation, Retaining Structure Construction and Foundation Execution	52	Construction Company of Behshahr Industries Development Group	Dar-Afzin Consulting Engineers Co.	Tehran
23	Gilan Province Central Building of Bank Saderat	54	Bank Saderat of Gilan Province	Sinam and Peyman Ghadir Consulting Engineers Co.	Rasht
24	Tehran Tower Residential complex	57	International Construction Development Company	Setek Batiman Consulting Engineers Co. (French Company)	Tehran
25	Tavanir Office Building (Headquarter of the Company)	72	A.S.P. Company	Houtan Consulting Engineers Co.	Tehran
26	Baharan Residential Complex	74	International Construction Development Company	Peyman Ghadir Consulting Engineers	Tehran
27	Besat Residential Complex	75	International Construction Development Company	Doran Shahr Co.	Tehran
28	Erfan Residential Complex	76	International Construction Development Company	Peyman Ghadir Consulting Engineers Co.	Tehran
29	Shahriar 2000 Units Residential Complex A.S.P. (Phase 1)	80	A.S.P. Company	Arman Shahr Consulting Engineers	Tehran-Shahriar
30	Shahriar 2000 Units Residential Complex A.S.P. (Phase 2)	80	A.S.P. Company	Arman Shahr Consulting Engineers	Tehran-Shahriar
31	Elahieh Residential Complex	84	Construction Cooperation with Private Sector	Hamkaran Consulting Engineers	Tehran
32	Sa'di Shiraz Commercial - Recreational Complex	86	International Construction Development Company	Peyman Ghadir Consulting Engineers Co.	Shiraz
33	Urbanization Preparation of Roshdih Servicing, Sport, Tourism Complex	88	Baghmishah Housing Company	Hajmin Consulting Engineers	Tabriz
34	Roshdih Residential Towers	90	A.S.P. Company	Tel Tav Consulting Engineers	Tabriz
35	Elahieh and Fereshteh Towers located at Morvarid Shahr Residential Town	92	Construction Cooperation with Employees Housing Cooperative Company of Dist.22	Tazand Consulting Engineers	Tehran
36	Pasargad Residential, Office, Commercial Complex	94	Construction Cooperation with Renovation Organization of Tehran-Municipality	Sharestan Consulting Engineers	Tehran
37	Shemshak 2 Recreational - Residential Complex	96	A.S.P. Company	Naghsh Paydar Consulting Engineers	Shemshak

	Execution Period (Months)	Completion Year	Execution Cost (Million Riials)	Type of Contract					Project Type				Number of Floors	Land Area (Sq. m)	Total Area	Net Area (m ²)			LandScaping
				Design & Construction E.P.C.F.	Contractual	Management Contract (Cost Plus)	Direct (Trust Fund)	Fixed Price	Residential	Office	Commercial	Other				Residential	Office - Commercial	Other	
	72	1975	2 000				●		●	●	●		23	52 000	-	104 000	8 000	18 500	1 000
	60	1990	40 000	●						●			33	7 000	-	-	53 000	-	5 000
	30	1979	3 000	●					●		●		10	41 000	-	21 000	-	-	36 000
	30	1983	6 000			●						●	7	2 300	-	-	12 500	-	-
	42	1990	6 800				●			●			5	29 500	-	-	36 000	-	19 500
	52	1995	21 000			●				●			11	1 000	-	-	9 000	-	-
	12	1996	4 000			●						●	2	10 000	-	-	-	8 000	-
	48	1997	1 700			●					●		6	7 950	-	-	37 000	-	-
	42	1996	7 400	●						●	●		7	1 170	-	-	6 600	-	470
	48	1996	4 600		●					●			6	1 150	-	-	5 600	-	-
	52	1995	6 190		●					●			6	-	41 000	-	410 000	-	-
	38	1996	4 000		●							●	5	-	11 000	-	-	11 000	-
	36	1997	3 900		●					●		●	6	-	6 500	-	6 500	-	-
	24	1995	1 090		●					●			2	-	3 800	-	3 800	-	-
	16	1997	346			●						●	-	10 000	6 000	-	-	-	6 000
	36	1995	3 300			●						●	-	15 000	3 000	-	-	3 000	12 000
	24	1996	2 500		●					●			6	2 500	-	-	5 300	-	1 100
	27	1992	8 400		●							●	3	11 000	-	-	-	12 000	5 000
	24	2000	1 290		●							●	1	-	-	-	-	2 100	-
	23	1999	9 880		●					●	●		2	12 000	-	-	10 000	-	500
	18	2000	3 000			●				●	●		6	1 900	-	-	6 500	-	500
	10	2000	3 500		●							●	-	1 400	-	-	-	-	-
	60	2003	26 687		●					●			11	3 000	-	-	11 000	-	1 700
	72	2010	2900 000	●					●				56	35 000	220 000	120 000	3 000	3 000	32 000
	24	2008	23 000				●			●			9	380	1 900	-	1 100	150	-
	24	2010	399 690	●					●				12	2 600	10 700	6 700	-	800	1 500
	30	2015	350 000			●			●				9	9 600	54 000	33 000	500	800	3 800
	30	2011	870 000			●			●				16&22	30 000	135 000	86 000	-	4 500	21 000
	36	2014	1 062 675				●		●				6	300 000	191 000	146 500	2 400	-	42 700
	-	Under Construction	255 183				●		●				6		51 000	47 000	3 200	-	
	24	2015	399 690	●					●				14	3 000	12 600	7 200	-	600	1 800
	30	Under Construction	600 000			●					●	●	12	6 000	55 000	-	16 000	5 000	-
	30	Under Construction	100 000		●							●	-	77 Hectare	-	-	-	-	-
	-	Under Construction	166 888	●					●				13	4 600	23 000	14 700	-	-	3 000
	36	Under Construction	1 296 692	●					●				31	3 400	67 000	42 500	-	500	1 700
	30	Under Construction	2 336 360	●					●	●	●		5&13	20 000	130 000	34 000	17 000	500	7 400
	-	Under Designing	990 000	●								●	15	38 000	95 000	Under Designing			

Residential, Office, Commercial Complex of Kooy-e Nobonyad-e Vanak (A.S.P Towers)



- Client_____A.S.P Company
- Consultant_____Setek Batiman Consulting Engineers Company (French Company)
- Location_____Tehran Province- Tehran City
- Duration_____72 months
- Completion_____1976
- Execution cost_____2 billion Rials
- Project type_____residential, Office, commercial
- Land Area_____52,000 m²
- Total area_____residential 104,000 m², commercial 8,000 m², other 18,500 m²
- Landscaping area_____11,000 m²
- Project location_____West 64 St, Kurdistan junction, Kurdistan highway, Tehran

**A.S.P Complex, which constructed more than 40 years ago, is still among
the best high-rise buildings of the country**

A view of the beautiful A.S.P complex



Residential, Office, Commercial Complex of Kooy-e Nobonyad-e Vanak (A.S.P Towers)

It contains:

250 apartment units, 120 apartment- villa units, 140 commercial units, 570 store units and parking lots.



A view of the beautiful A.S.P complex

Residential, office and commercial complex of Kooy-e Nobonyad-e Vanak, known as A.S.P complex, is among those rare high-rise buildings constructed with highest quality possible, observing all technical principles and regulations, reinforced concrete, and pre-stressed concrete façade. This complex possesses highest construction standards and demonstrates the favorable facilities of a residential, office, commercial, and welfare space such as pool, kindergarten, gymnasium, shopping center, and restaurant.

This complex contains 250 apartment units, 120 apartment- villa units, 140 commercial units, 570 store units and parking lots, and includes three towers. Four elevators have been installed for each tower.

According to experts, the construction of this complex is the honor of building engineering profession of Iran.





Southern view (entrance) Sepehr tower

Central building of Saderat Bank of Iran Sepehr Tower

- Client _____ Saderat Bank of Iran
- Consultant _____ Setek Batiman Consulting Engineers Company (French Company)
- Location _____ Tehran Province- Tehran County
- Duration _____ 60 months
- Completion _____ 1991
- Execution cost _____ 40 billion Rials
- Project type _____ administrative
- Number of floors _____ 33 floors
- Land Area _____ 7,000 m²
- Total Area _____ office 53,000 m²
- Landscaping area _____ 5,000 m²
- Project location _____ Somaye St, Tehran



بانک صادرات ایران

Construction technology,
electricity and mechanical
installations of
Sepehr Tower
have been adopted
according to the
best international standards.



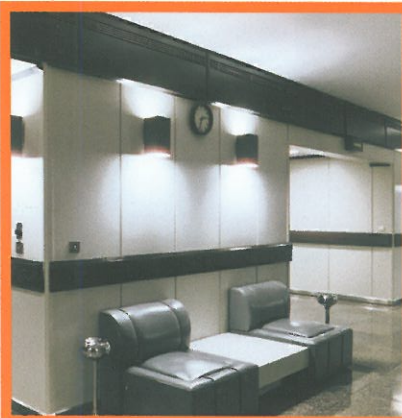
Constructing of
Sepehr Tower
is one of the honor of
building engineering
profession of Iran.



Sepehr Tower Entrance



■ Internal facade of restaurant and conference hall in the 26th floor of Sepehr Tower



■ Interior view of praying house and corridors

■ Sepehr Tower

With more than 53,000 m² area and 33 floors, is one of the tallest skyscrapers of Iran.

Given Sepehr Tower's construction period, this tower benefits from the best engineering specifications in architectural, structural, mechanical and electrical design. In addition it favors high construction quality.

The structure type of this building is reinforced concrete and its façade is composed of pre-stressed concrete and modular components.

The parking area is 15,000 m² which has the capacity of 350 vehicles. Its HVAC systems are air conditioner and fan coils. This building has 9 elevators and a freight elevator with appropriate speed.



■ Main usage of the building is office and its subsidiary spaces are composed of conference hall, praying house, library, restaurant, and self-service alongside equipped kitchen.

■ The building entry design and construction is inspired by Iranian- Islamic architecture. Moreover, the landscaping and green space assists visual comfort.



Shemshak Residential and Sports Complex

■ Client	A. S. P Company
■ Consultant	Setek Batiman Consulting Engineers Company (French Company)
■ Location	Tehran Province- Shemshak District
■ Duration	30 months
■ Completion	1979
■ Execution cost	4 billion Rials
■ Project type	residential
■ Number of floors	1 ten-floors apartment beside 35 wooden chalet floors
■ Land Area	41,000 m ²
■ Total Area	21,000 m ²
■ Project location	Shemshak, Tehran



Image of project during construction

■ Shemshak residential complex is one of the best and most beautiful summer villas of Iran located in Shemshak winter sports area. It consists of two main building types including 198 apartments and 35 residential units (wooden chalets).

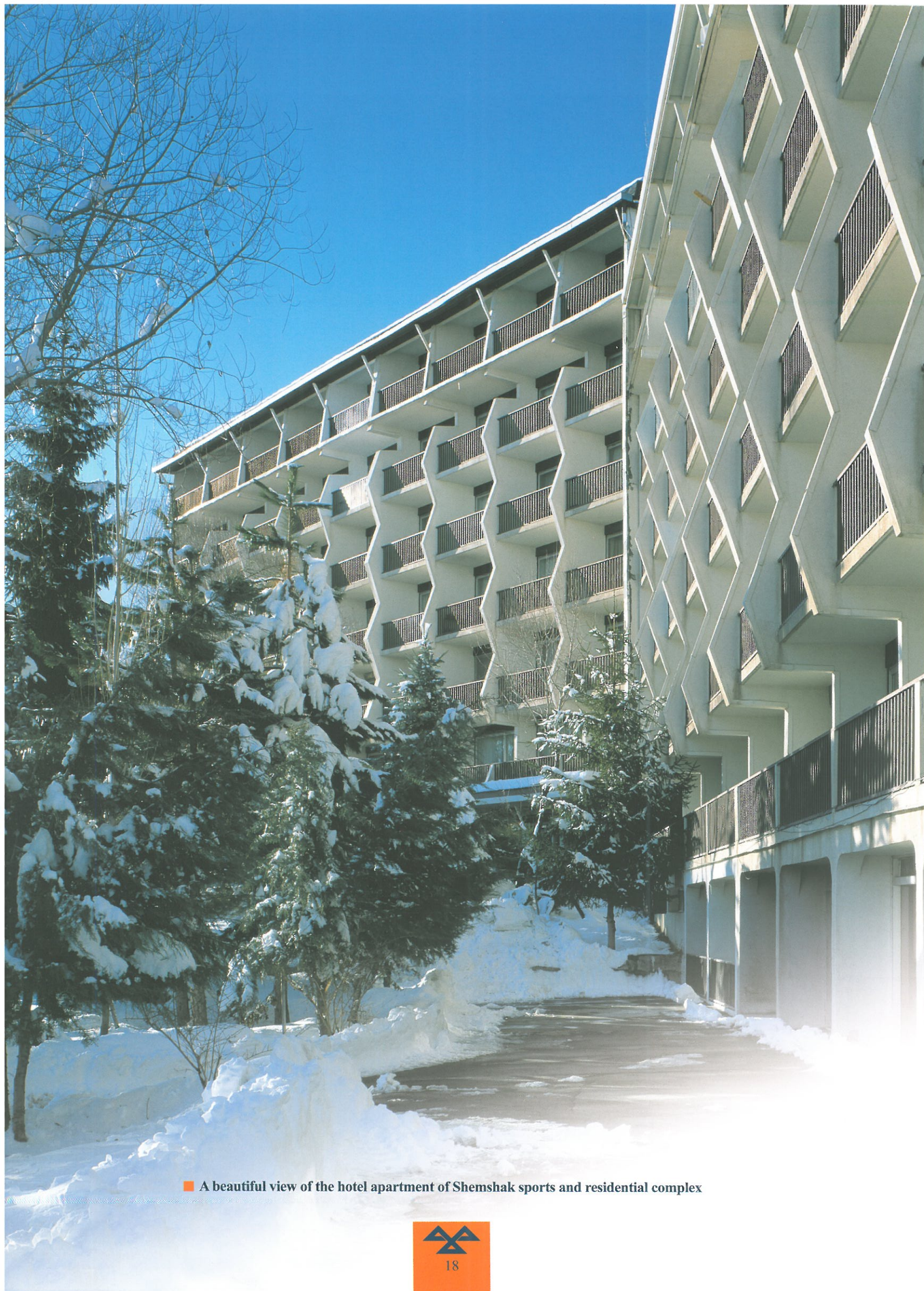
The architecture of this building is unique and its various parts have been constructed from high quality materials.



■ A beautiful view of the apartments and wooden chalets of Shemshak sports and residential complex







■ A beautiful view of the hotel apartment of Shemshak sports and residential complex



■ Pictures of interior of wooden chalets





Grand Ferdowsi Hotel

- Client ————— Mr. Poor-Aziz
- Consultant ————— Saqa-Zadeh, Zangeneh, Khorsandi (Eng. Team)
- Location ————— Tehran Province- Tehran County
- Duration ————— 30 months
- Completion ————— 1989
- Execution cost ————— 6 billion Rials
- Project type ————— commercial
- Number of floors ————— 7 floors
- Land Area ————— 2,300 m²
- Total Area ————— 12,500 m²
- Project location ————— South Ferdowsi St, Kushk St, Tehran

■ This project has been constructed in one of the most crowded commercial regions near Tehran big bazaar. The 4-star **Ferdowsi** Hotel has modern equipment and systems. High quality finishing have been performed using precious stones, beautiful ceramics, wood, bronze, and modern acrography. The ground floor of the hotel includes: Lobby, coffee shop, store, and a big and luxurious restaurant. The underground floor includes special halls for celebrations and parties. Upper floors have single and double bedrooms and suites.



Engheleabe Eslami Telecommunication Complex

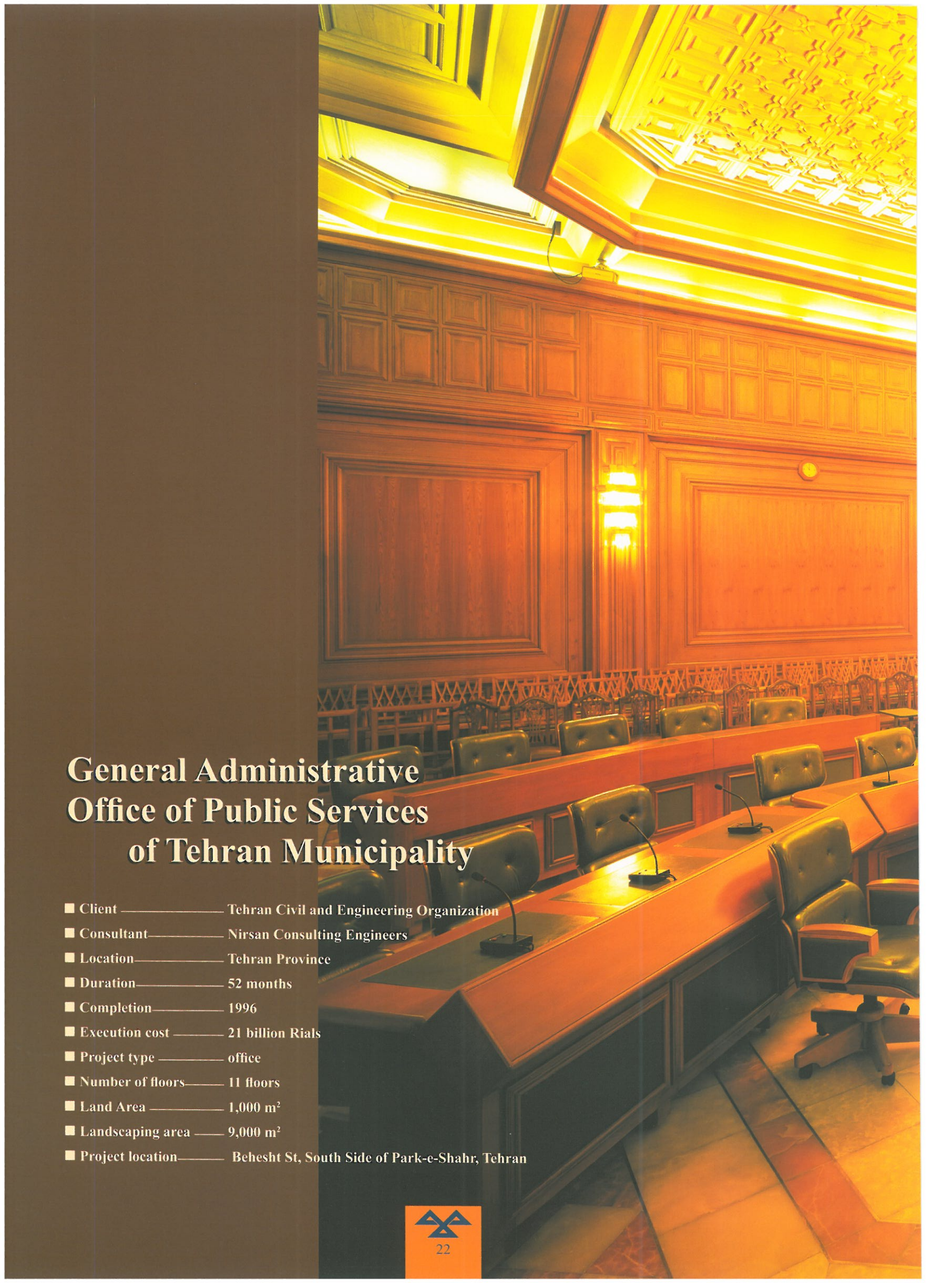
- Client ————— Telecommunications Company of Iran
- Consultant ————— ATEC Consultants
- Location ————— Tehran Province
- Duration ————— 42 months
- Completion ————— 1995
- Execution cost ————— 6.8 billion Rials
- Project type ————— office, technical
- Number of floors ————— 5 floors
- Land Area ————— 29,500 m²
- Landscaping area ————— 19,572 m²
- Project location ————— End of west 64 St, Kurdistan junction, Kurdistan highway, Tehran

■ This building as the center for telecommunications (internal and abroad) with a high capacity is parallel with Imam Square Telecommunication Center via three strings of optic cables. Thus, particular specifications have been considered in the project's architectural, structural, and mechanical design, the most important of which are:

- Constructing more than 17,000 m² false floor to facilitate cabling between various salons of machines and equipment.
- More than 15 ventilator units for machinery salons, 3.3 megawatts emergency power generation plant.
- Airtight windows and doors
- Completely innovative system for installing façade stone tiles.

(In this building for the first time in Iran, façade stone tile has been installed in a dry and industrial method and without mortar). Restaurant and amphitheater have been included in this complex.





General Administrative Office of Public Services of Tehran Municipality

- Client ——— Tehran Civil and Engineering Organization
- Consultant ——— Nirsan Consulting Engineers
- Location ——— Tehran Province
- Duration ——— 52 months
- Completion ——— 1996
- Execution cost ——— 21 billion Rials
- Project type ——— office
- Number of floors ——— 11 floors
- Land Area ——— 1,000 m²
- Landscaping area ——— 9,000 m²
- Project location ——— Behesht St, South Side of Park-e-Shahr, Tehran



Regarding the value of decorations and construction quality of the building, experts have considered it as part of **contemporary architectural inheritance.**

■ This project was initially designed for Tehran municipality Service Department; but subsequently when municipality authorities changed its type; it was completed for the mayor's office, consultants, deputies, and finally City Council of Tehran. Regarding its performance, this building utilizes the most advanced and modern equipment, HVAC and electricity systems. Precious stones, wood, and bronze have been used in finishing and decorations. It has been constructed with highest quality possible. Regarding the value of decorations and construction quality of the building, experts have considered it as part of contemporary architectural inheritance.





■ Precious stones, wood, and bronze have been used in finishing and decorations. It has been constructed with highest quality possible.







■ Northern view of General Administrative Office of Public Services of Tehran Municipality



■ Structural system of this building is steel framing with composite slabs. Because of its type, this construction has no heating/cooling facilities and its electrical system contains fire alarm and extinguisher systems. Also it has CCTV. Its top roof is being used for roof garden and waterfront.

Final stages of this project including finishing were not in the scope of this company's contract.

Central municipality underground parking building

■ Client	Tehran Civil and Engineering Organization
■ Consultant	Nirsan Consulting Engineers
■ Location	Tehran Province- Tehran County
■ Duration	12 months
■ Completion	1997
■ A.S.P commitments	4 billion Rials
■ Project type	multi- story parking
■ Number of floors	2 floors
■ Land Area	10,000 m ²
■ Landscaping area	Parking 8,000 m ²
■ Project location	Behesht St, South Side of Park-e-Shahr, Tehran



Tehran Tools and door and window hardware Bazaar

- Client ————— Saderat Bank of Iran
- Consultant ————— Safa Manesh
- Location ————— Tehran Province- Tehran County
- Duration ————— 48 months
- Completion ————— 1996
- Construction cost — 17 billion Rials
- Project type ————— commercial
- Number of floors — 6 floors
- Land Area ————— 7,945 m²
- Landscaping area — 37,000 m²
- Project location ——— Imam Khomeini St, Tehran





■ Given the narrow width of the ground, this building has been designed in an underground direction utilizing modern architecture. It favors natural light through center corridors. The facade has simplicity and attractiveness simultaneously.





Gholhak Office-Commercial Complex

- Client ————— A. S. P Company
- Consultant ————— Azmayesh
- Location ————— Tehran Province- Tehran County
- Duration ————— 42 months
- Completion ————— 1996
- Construction cost — 7.4 billion Rials
- Project type ————— office, commercial
- Number of floors — 7 floors
- Land Area ————— 1,172 m²
- Net area ————— commercial 900 m², office 5,726 m²
- Landscaping — 470 m²
- Project location ——— Facing metro station, Yakhchal junction,
Shariati St, Tehran

■ The architecture of this project is inspired by the concepts of Iranian classic architecture, giving a special and favorable mood to the project.

Structural design and specifications, architectural design, and construction of the project are according to the best international standards. In addition, an attempt was made to include the Iranian outstanding and beautiful buildings during the last 50 years in façade design. The most modern techniques have been used to construct the project and its details.





Central Building of Saderat Bank- Karaj City

- Client ————— Saderat Bank of Iran
- Consultant ————— Dahe Consultant Engineers
- Location ————— Alborz Province- Karaj County
- Duration ————— 48 months
- Completion ————— 1996
- Construction cost — 4.6 billion Rials
- Project type ————— office
- Number of floors — 6 floors
- Land Area ————— 7,945 m²
- Total Area ————— 8,000 m²
- Project location ——— Taleghani junction, Karaj

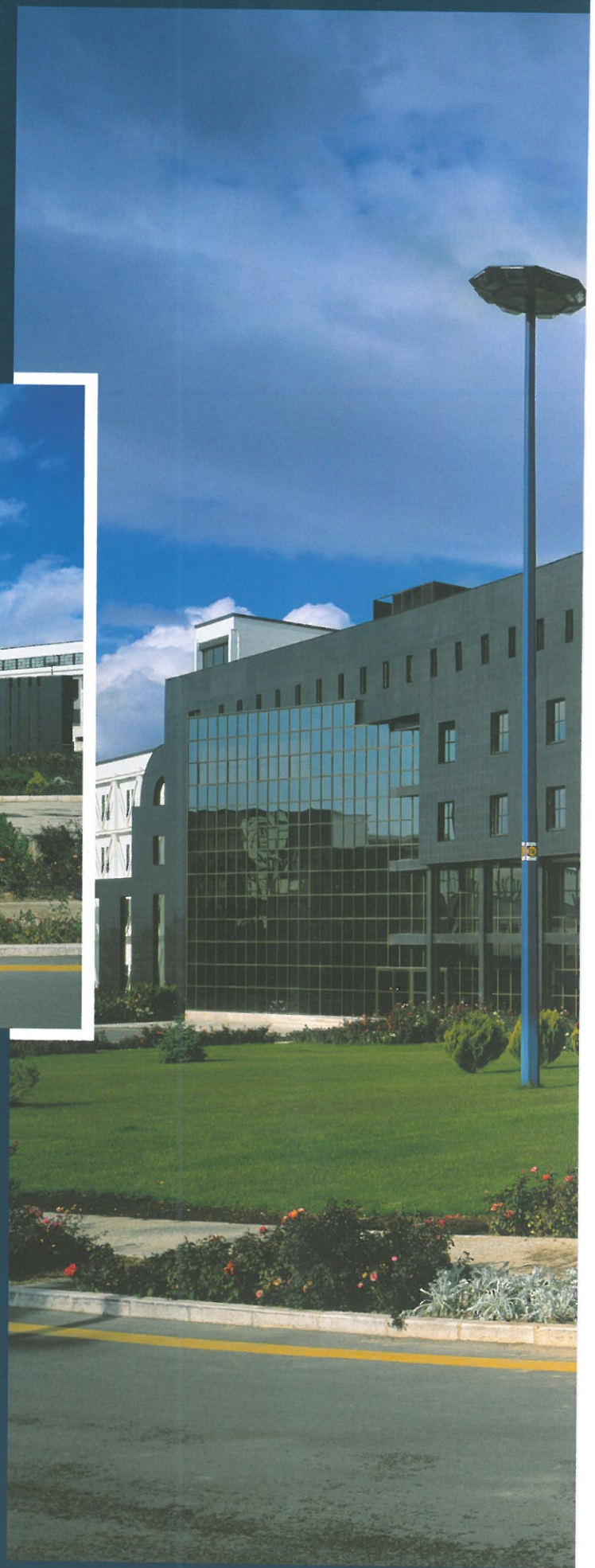
■ The form of the building has created a favorable space for the entrance and use of dark color has created a special elegance.

The external façade is black granite and reflex glass, which the reflection of the sky and front buildings combines the building façade with existing environment.

The structure is made of reinforced concrete and enjoys state-of-the-art installation systems such as air conditioner. Wood has been used in internal architecture of ground floors, and stucco and paint in other floors.

Various floors of the building can be accessed through three stairways and three elevators.





Power Research Center

1 Amphitheatre and Office Building

- Client ————— Iranian Energy Organization
- Consultant ————— ATEC Consultanting Engineers
- Location ————— Tehran Province- Tehran County
- Duration ————— 52 months
- Completion ————— 1996
- Construction cost — 6.190 billion Rials
- Project type ————— office
- Number of floors — 6 floors
- Total Area ————— 41,000 m²
- Project location — End of Phase 6, Shahrake-e Gharb, Tehran





■ From architectural point of view, this building is among the prominent buildings constructed in the recent two decades in Tehran. While it uses harmonious and beautiful architecture, it has also been constructed with high precision and quality. Its façade is constructed of black granite along with cement and reflex glass. It has steel structure, concrete walls, and joist decks.

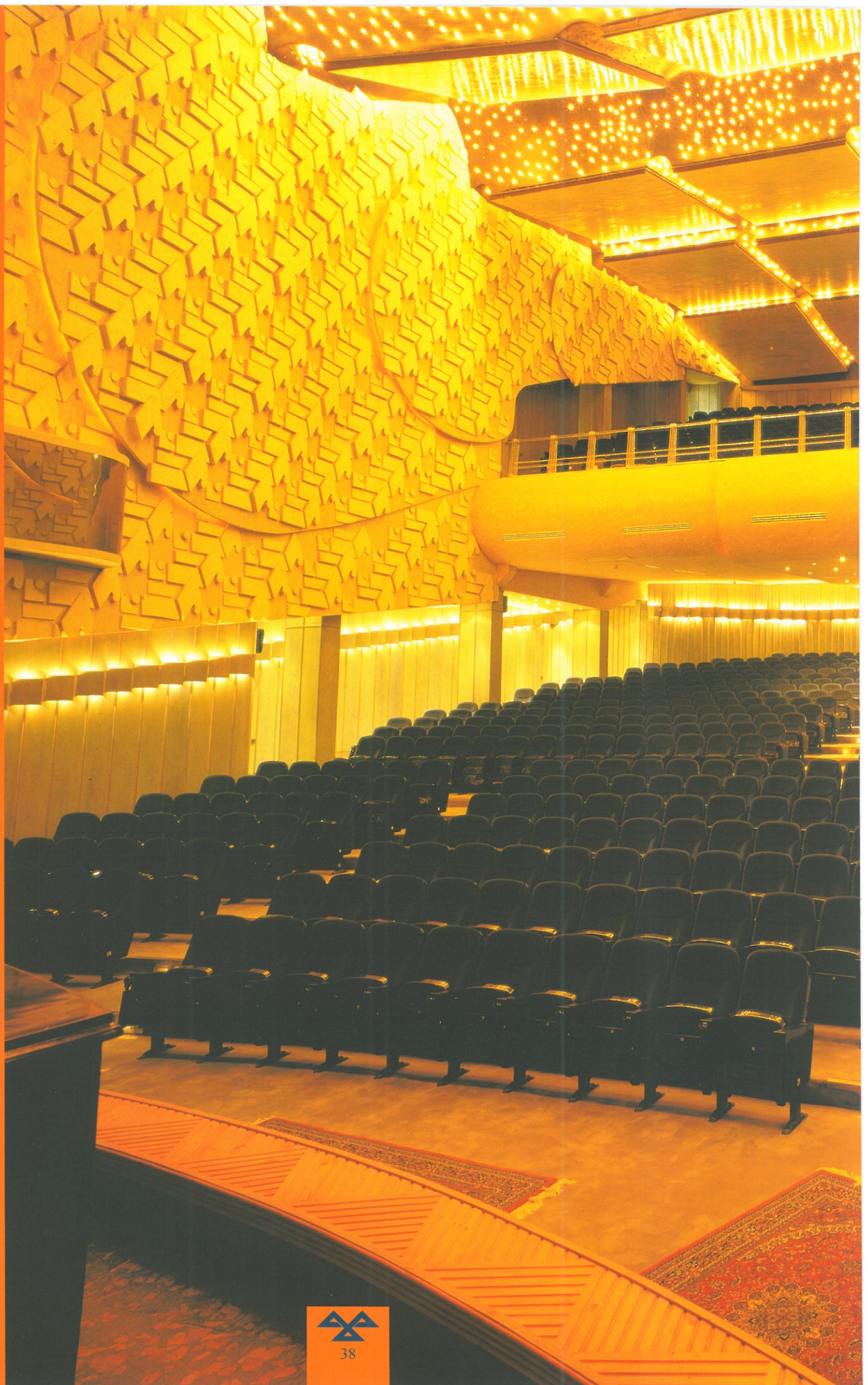






While it uses
harmonious and
beautiful architecture,
it has also been constructed
with **high precision**
and **quality.**









Power Research Center

2 Chemistry and Mechanic Laboratories Complex

- Client ————— Iranian Energy Organization
- Consultant ————— ATEC Consulting Engineers
- Location ————— Tehran Province- Tehran County
- Duration ————— 38 months
- Completion ————— 1996
- Construction cost — 3 billion Rials
- Project type ————— laboratory, industrial
- Number of floors — 5 floors
- Total Area ————— 11,000 m²
- Project location — End of Phase 6, Shahrak-e Gharb, Tehran

■ The building of Chemistry and Mechanic Laboratory Complex is one of the most harmonious and beautiful buildings of Power Research Center. Apart from having variety and different surface, it possesses special harmony and beauty.





■ The Power Research Center Laboratories Complex includes A, B, and C blocks, each constructed in five floors. This complex has reinforced concrete structure with joist decks. The façade is made of black granite. Mechanical installations of the complex include fan coil for office parts and corridors, two-way ventilation system for classrooms and conference halls, one-way ventilator system for laboratories, emergency electricity, and voice messaging systems.





Power Research Center

3 60-office units building

- Client ————— Iranian Energy Organization
- Consultant ————— Engineering Organization of
of Ministry of Power
- Location ————— Tehran Province- Tehran County
- Duration ————— 36 months
- Completion ————— 1995
- Construction cost — 3,090 billion Rials
- Project type ————— office
- Number of floors — 6 floors
- Total Area ————— 6,500 m²
- Project location — End of Phase 6, Shahrak-e Gharb, Tehran

■ Inspired by Iranian architecture, central yard has been incorporated in this building. It has glass roof with 9-meter span, which contains fountain and green space. The façade is composed of black and grey granite as well as white cement façade, aluminum windows, and reflex glass. It possesses two elevators, library, conference hall and educational space, complete self-service, and dining hall having a capacity of 200 people.

(Final parts of finishing works are not among the scope of A.S.P Company contract)





Power Research Center

4 Industrial Sheds

- Client ————— Iranian Energy Organization
- Consultant ————— Technical and Engineering Organization
of Ministry of Power
- Location ————— Tehran Province- Tehran County
- Duration ————— 36 months
- Completion ————— 1995
- Construction cost — 3.090 billion Rials
- Project type ————— office
- Number of floors — 6 floors
- Total Area ————— 6,500 m²
- Project location — End of Phase 6, Shahrak-e Gharb, Tehran

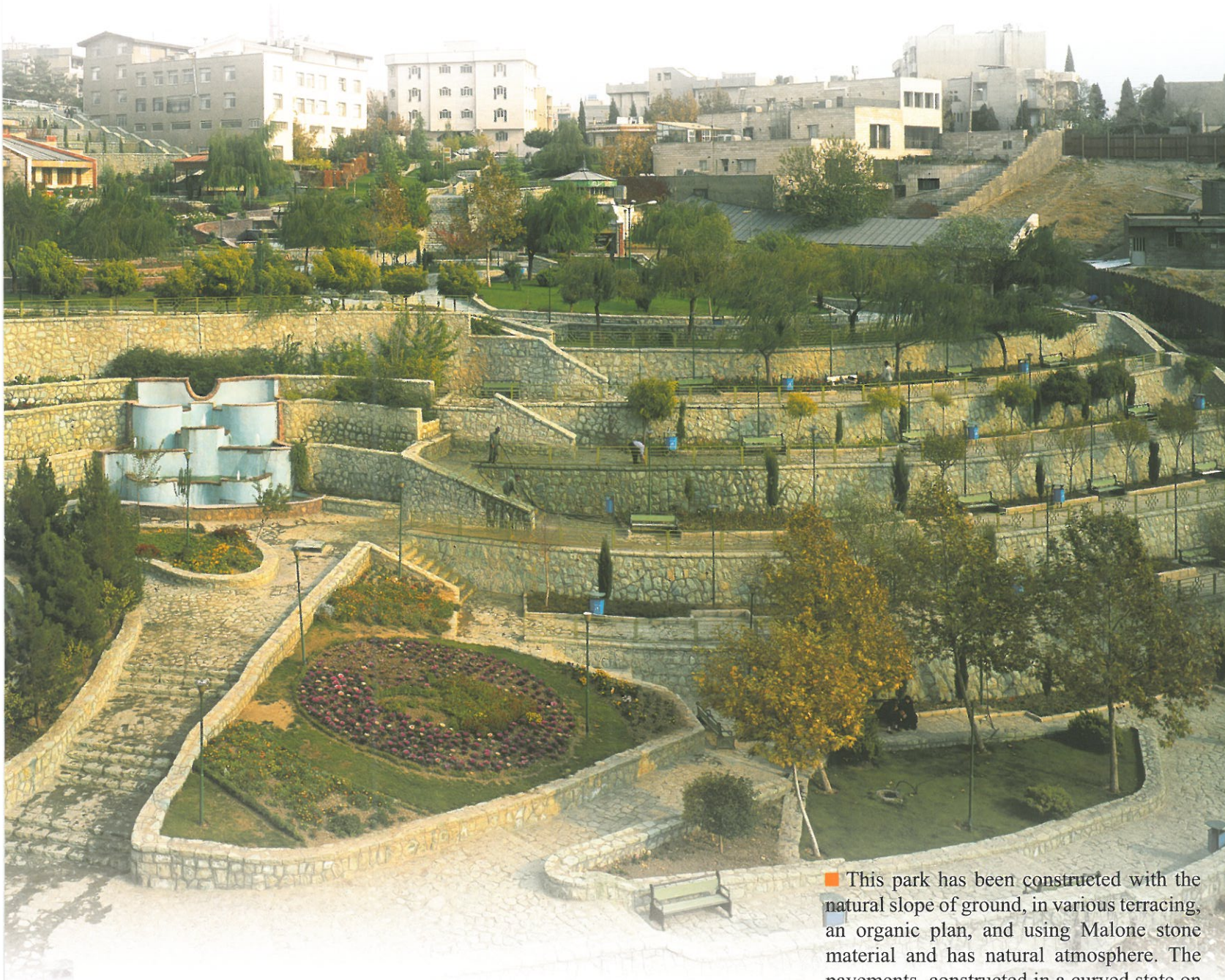




Hossein Abad Sports and Cultural Complex

- Client ————— Bank Saderat of Iran
- Consultant ————— Peyman Ghadir Consultant Engineers Company
- Location ————— Tehran Province- Tehran County
- Duration ————— 16 months
- Completion ————— 1995
- Construction cost — 346 million Rials
- Project type ————— cultural
- Area ————— 10,000 m²
- Landscaping Area — 6,000 m²
- Project location ——— Hossein Abad Sq, Lavizan, Pasdaran St, Tehran

■ This complex contains three fountains with sitting podiums and stone water passage, display and speech podium, pumping house and spiral children play ground. The eastern area includes a fountain, sitting podium, and access passages to dining hall.



Nezami Ganjavi Park

- Client ————— Tehran Municipality Parks Organization
- Consultant ————— Peyman Ghadir Consultant Engineers Company
- Location ————— Tehran Province- Tehran County
- Duration ————— 36 months
- Completion ————— 1996
- Construction cost — 2.3 million Rials
- Project type ————— cultural- recreational
- Land Area ————— 15,000 m²
- Total Area ————— Cultural 3000 m²
- Landscaping Area — 12,000 m²
- Project location ——— Nezami Ganjavi St, Tavanir St, Tehran

■ This park has been constructed with the natural slope of ground, in various terracing, an organic plan, and using Malone stone material and has natural atmosphere. The pavements, constructed in a curved state on the ground natural slope, creating beautiful and different scenes for pedestrians.

■ Park sections are:
Library, park office, restaurant, playground, fountain, WC, electricity post, and pumping house

The library has been built in two floors, decorated with Nezami's poems and a special architecture. It contains a main salon with high elevated ceiling, bookstore, various offices, men and women studying halls. The shape of the library is a dome layered with copper, constructed masterfully and with a high quality.

Flooring, walls, and terraces have been linked to each other and are made of green marble. Boiler package have been used for library heating systems.



The building for Investment Company of Social Security Organization

- Client — Iran Sazeh Company
- Consultant — Sinam Consultant Engineers Co.
- Location — Tehran Province- Tehran County
- Duration — 24 months
- Completion — 1993
- A. S. P Commitments — 2.5 million Rials
- Floors — 6 floors
- Project type — office
- Land Area — 2,400 m²
- Total Area — 5,270 m²
- Landscaping Area — 1,100 m²
- Project location — Shiraz St, Mola-Sadra St, Tehran



■ The building for Investment Company of Social Security Organization uses a solid, harmonious and simple architecture, distinguishing it from other buildings. Prestressed concrete components have been used in southern façade; the rhythm of these components has given it a special elegance. In the eastern façade, which hosts the entry of the building, stone and reflex glass has been applied. Its structure is reinforced concrete and its floors are made from joist decks.

HVAC system is air conditioning (ceiling and ground fan coils) and there are two elevators. Finishing works are not among the scope of A.S.P company's contract.



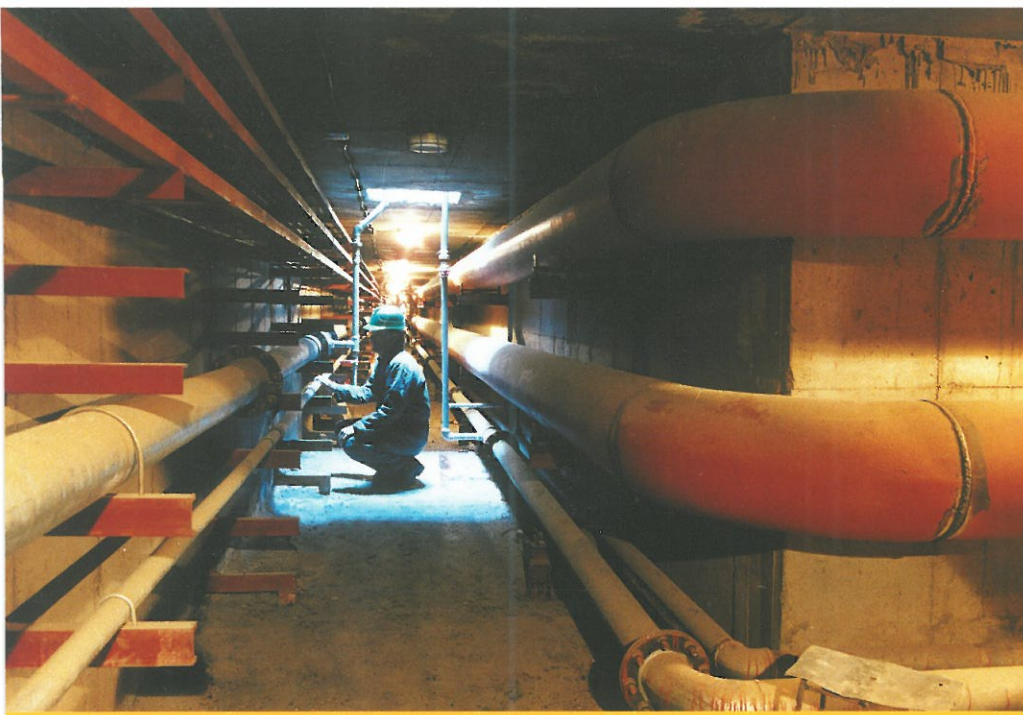


Mathematics College of Shahed University

- Client ————— Shahed University
- Consultant ————— Pars Gostareh Consultant Engineers Co.
- Location ————— Tehran Province- Tehran County
- Duration ————— 27 months
- Completion ————— 2000
- Construction cost — 8.4 billion Rials
- Project type ————— office, educational
- Floors ————— 3 floors
- Land Area ————— 11,000 m²
- Total Area ————— 12,000 m²
- Landscaping Area — 4,000 m²
- Project location ——— Qom, Fifth Kilometer of Tehran Highway, Tehran

■ This building is part of sciences college of Shahed University and includes library, classes, office parts, and curriculum supplement spaces.

It is designed based on Shahed University Master Plan. Its structural system is reinforced concrete framing and has full electrical and mechanical equipment. The landscape of this complex, with an area of around 4,000 m², has given this educational building a lively atmosphere. The best engineering techniques have been employed to construct this building.

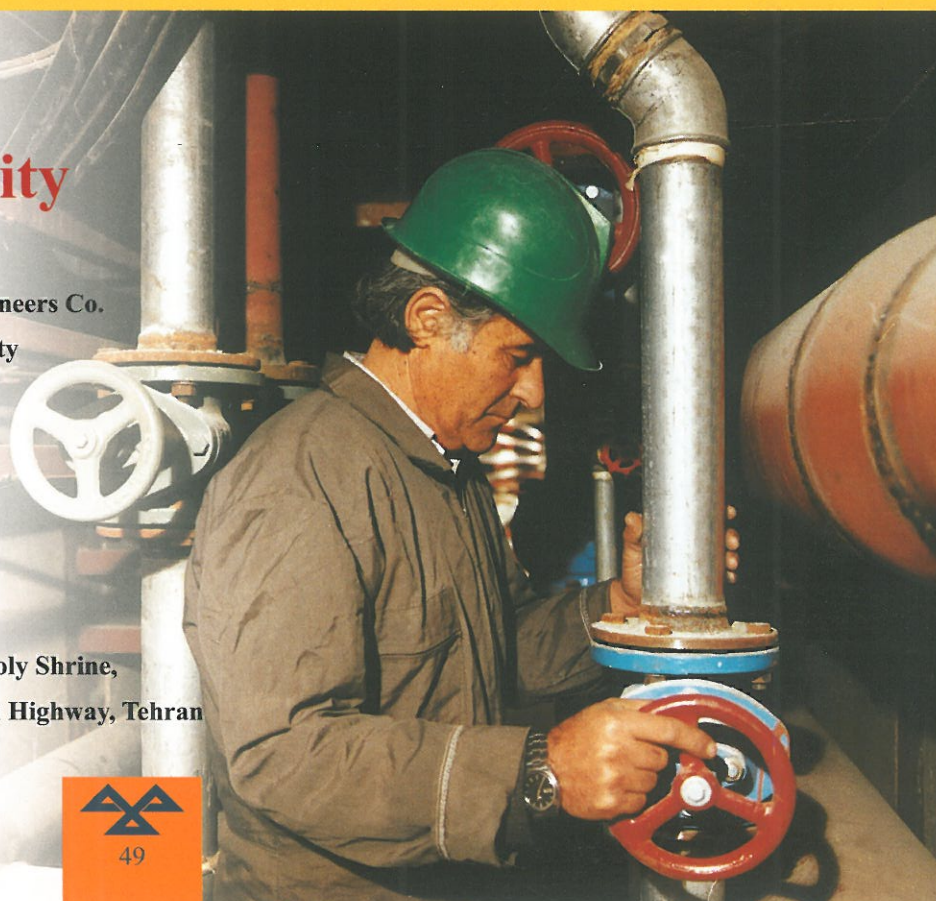


■ In the master plan of Shahed University, a central utility room with advanced equipment including two boilers and two absorption chillers are installed.

This utility room supports various buildings of the university with an 1100 m manhole canal.

Utility room and manhole canal of Shahed University

- Client ——— Shahed University
- Consultant ——— Pars Gostareh Consultant Engineers Co.
- Location ——— Tehran Province- Tehran County
- Duration ——— 24 months
- Completion ——— 2000
- Construction cost ——— 4 billion Rials
- Project type ——— infrastructural installations
- Total Area ——— 2,100 m²
- Landscaping Area ——— 4,000 m²
- Project location ——— west side of Imam Khomeini Holy Shrine, Qom, Fifth kilometer of Tehran Highway, Tehran





Commercial – Office Complex of Nakhl Zarin Qeshm



- Client ————— Omran Qeshm Co.
- Consultant ————— Peyman Ghadir Consultant Engineers Co.
- Location ————— Hormozgan Province, Hormozgan County
- Duration ————— 23 months
- Completion ————— 1999
- Construction cost — 9.880 billion Rials
- Project type ————— commercial, office
- Floors ————— 2 floors
- Land Area ————— 12,000 m²
- Total Area ————— Commercial 5,000 m²
office 5,000 m²
- Project location ——— Qeshm Island

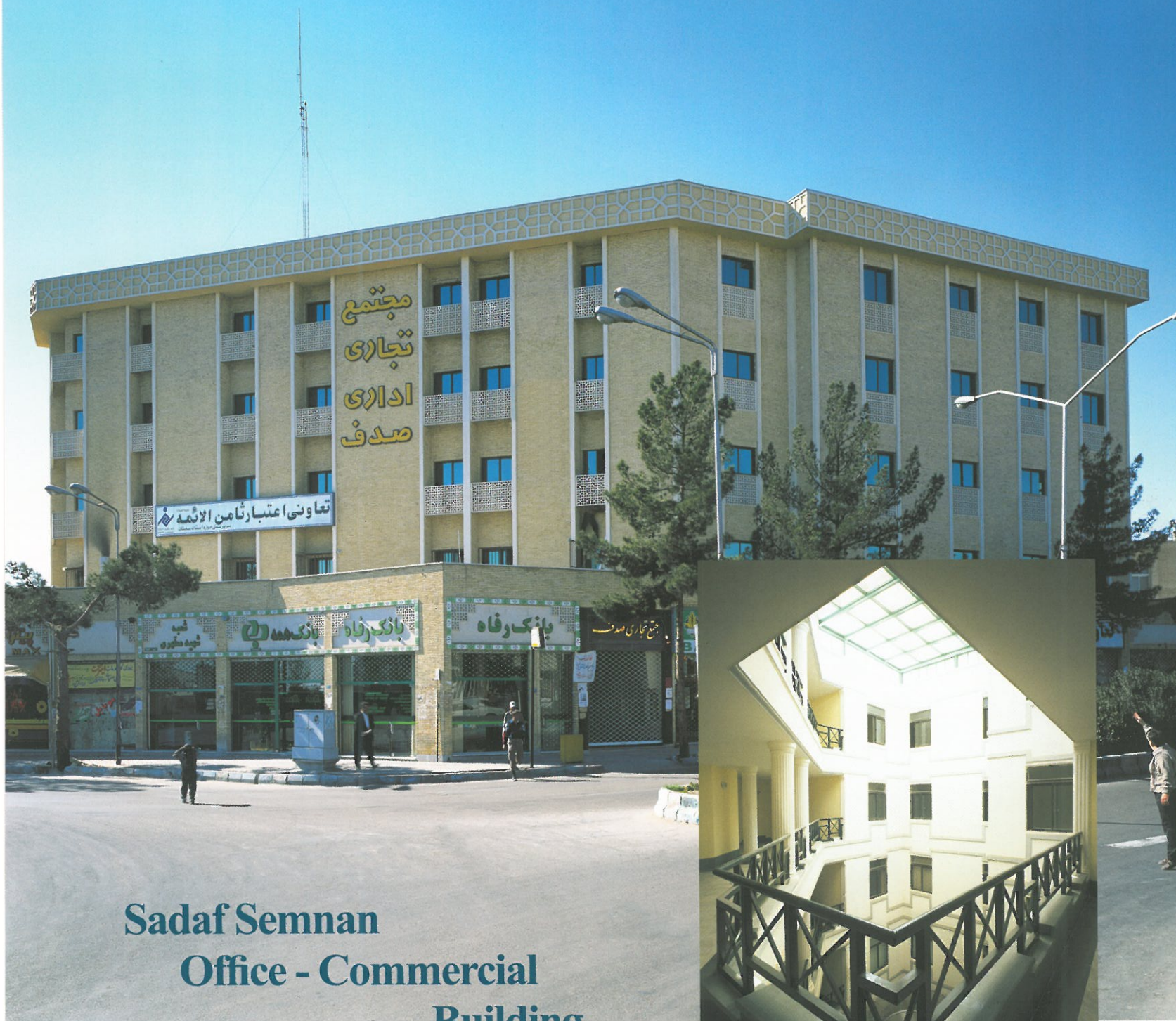
■ The office and commercial area of this complex are: 5,000 m² each. This complex has two 3-story blocks, the type of which are as follows:

- Ground floor: 21 commercial units plus communication corridors and entries.
- The first Mezzanine: stores for commercial units
- First floor: office suites

Its structure is steel framing and stand-alone package has been used in mechanical installations.

The facade is cement and Kenitex mixture.





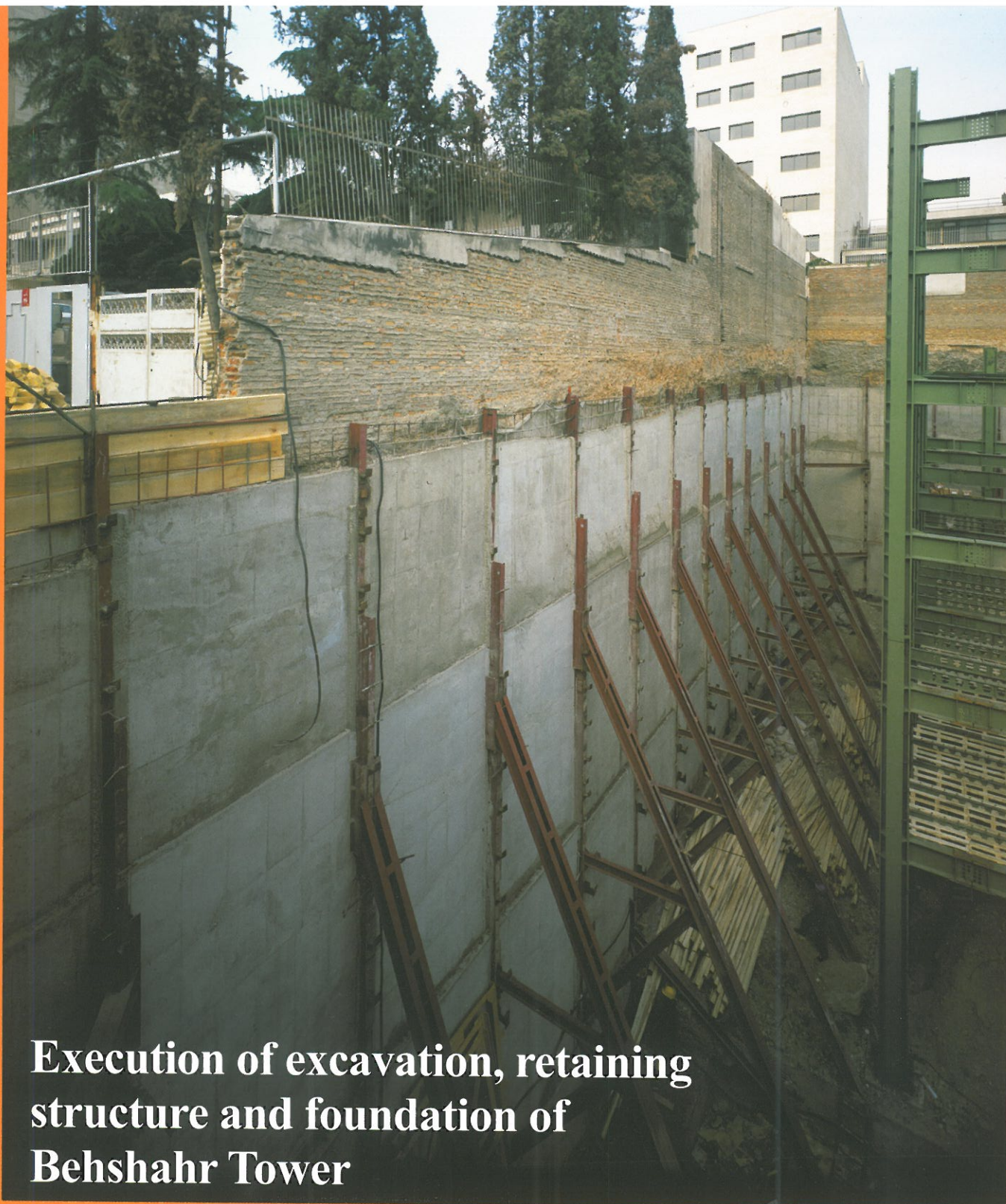
Sadaf Semnan Office - Commercial Building

- Client ————— Saderat Bank of Semnan
- Consultant ————— Technical office of A. S. P Company
- Location ————— Semnan Province- Semnan County
- Duration ————— 18 months
- Completion ————— 2000
- A.S.P Commitments — 3 billion Rials
- Project type ————— commercial, office
- Number of floors — 6 floors
- Land Area ————— 1,900 m²
- Total Area ————— commercial 1,900 m²
office 4,600 m²
- Project location ——— Motahari Sq, Semnan



■ A.S.P Company has performed the engineering and design of this project in addition to the construction.

The function of this building is commercial-office which belongs to Saderat Bank of Semnan. The ground and first underground floors have commercial usages while upper floors are office. The combination of modern and Islamic architecture has been employed in design of the building and the brick façade has been decorated by Iranian- Islamic architectural patterns. This building is among the most distinctive buildings of Semnan City.



Execution of excavation, retaining structure and foundation of Behshahr Tower

- Client ————— Construction Company of Behshahr Industries Development Group
- Consultant ————— Dar Afzin Consultant Engineers Co.
- Location ————— Tehran Province- Tehran County
- Duration ————— 10 months
- Completion ————— 2000
- Execution cost ————— 2.550 billion Rials
- Project type ————— excavation, retaining and footing structure
- Land Area ————— 1,400 m²
- Project location ————— Corner of 15 St, Ahamd Qasir (Bucharest) St, Argentina Sq, Tehran



■ Because of the special situation of the project and the necessity of excavation, foundation, and retaining wall all over ground surface, execution of foundation was complicated.

Excavation and executive operations of this project required an expert and experienced team to make necessary group decisions based on environmental conditions at each time. Having such a team, A.S.P Company successfully executed the project at the right time beside full safety. This project is considered as special task for the issues related to execution operations.





Central building of Saderat Bank- Gilan Province

- Client ————— Saderat Bank- Gilan Province
- Consultant ————— Sinam Consulting Engineers Co. &
Peyman-e Ghadir Consulting Engineers Co.
- Location ————— Gilan Province- Rasht County
- Duration ————— 60 months
- Completion ————— 2003
- Execution cost ————— 26.687 billion Rials
- Project type ————— office
- Number of floors ————— 11 floors
- Land Area ————— 3,000 m²
- Total Area ————— office 11,000 m²
- Project location ————— Farhang Sq., Imam Khomeini St., Rasht

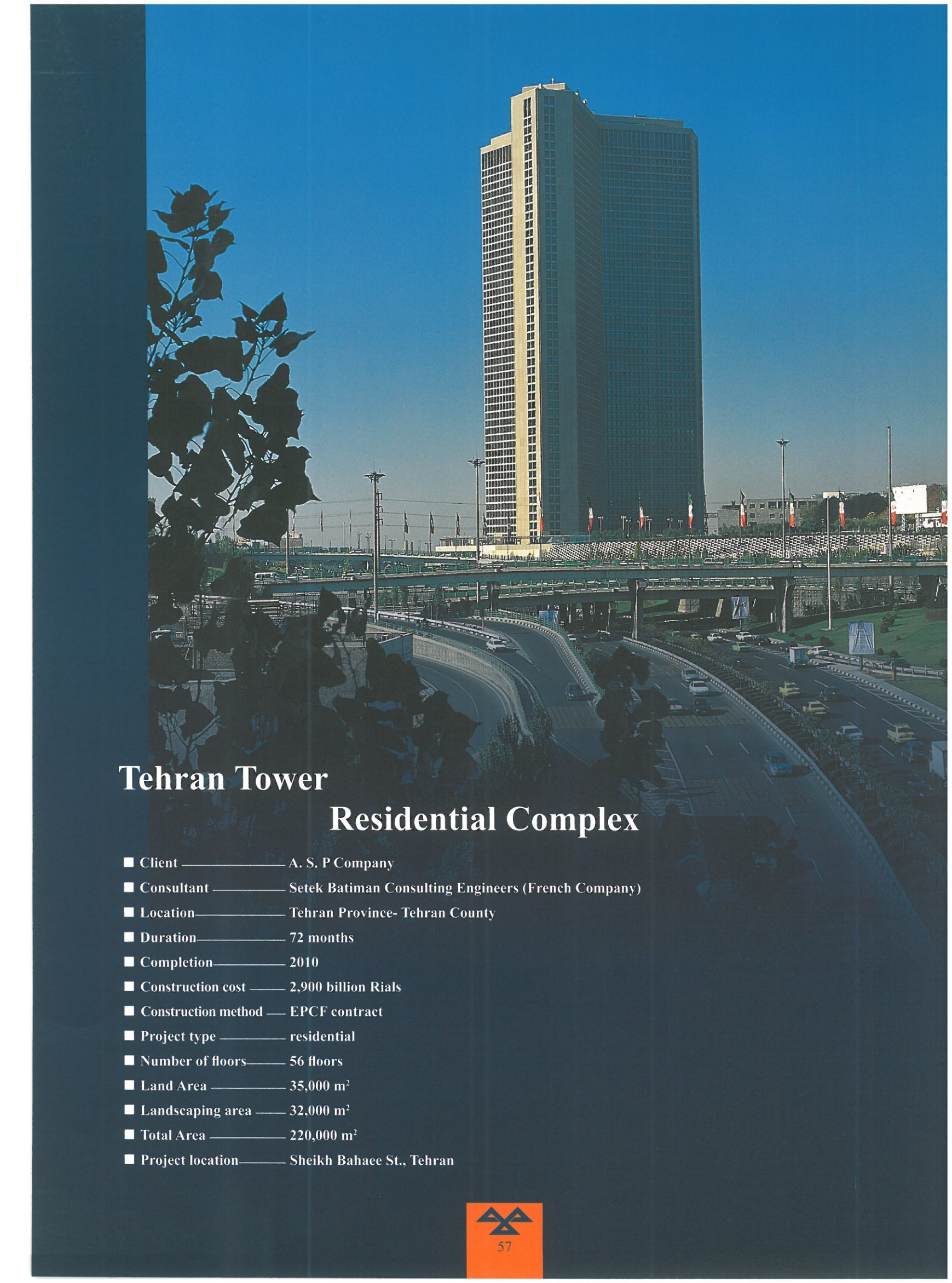


■ This is the tallest building in Gilan Province, which due to the low bearing capacity of soil in Rasht City; it has been constructed on reinforced concrete piles to the depth of 20 meters. The façade consists of exposed concrete and glass, executed with high quality.

The HVAC system is equipped with reciprocating chillers, boilers and air handling units. This building is meant to be used by the central administration of Saderat Bank of Gilan Province. The ground floor is dedicated to the exclusive branch of the bank and is constructed with modern architecture and amphitheater hall.





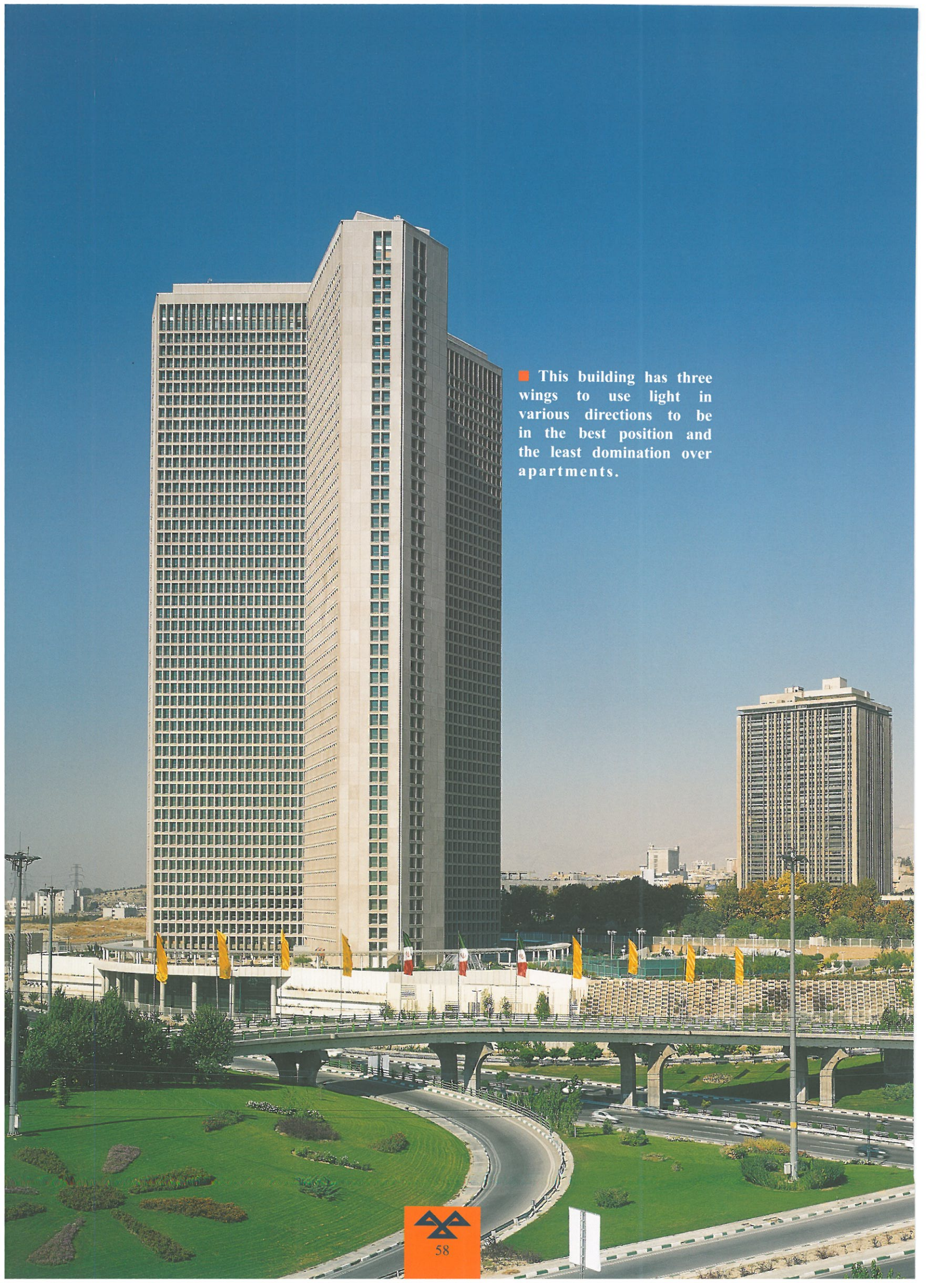


Tehran Tower

Residential Complex

- Client ————— A. S. P Company
- Consultant ————— Setek Batiman Consulting Engineers (French Company)
- Location ————— Tehran Province- Tehran County
- Duration ————— 72 months
- Completion ————— 2010
- Construction cost ——— 2,900 billion Rials
- Construction method — EPCF contract
- Project type ————— residential
- Number of floors ——— 56 floors
- Land Area ————— 35,000 m²
- Landscaping area ——— 32,000 m²
- Total Area ————— 220,000 m²
- Project location ——— Sheikh Bahae St., Tehran





■ This building has three wings to use light in various directions to be in the best position and the least domination over apartments.



■ 56-floor Tehran Tower is the highest residential tower of Iran. Upon constructing this tower, A.S.P Company can claim that it possesses the most comprehensive knowledge of constructing high-rise buildings according to international standards. Constructing Tehran Tower has maximized the brilliant record of the company in constructing high quality special buildings with high technical and engineering standards.

Apart from brilliant architecture, this building has the most modern and technical construction and HVAC systems. Usage of the floors is as follows:

51 residential floors

1 entry floor and its accessions including commercial units

3 parking floors, sports space, and part of mechanical systems, restaurant, and amphitheater

1 installation floor in 21st story as amplification station

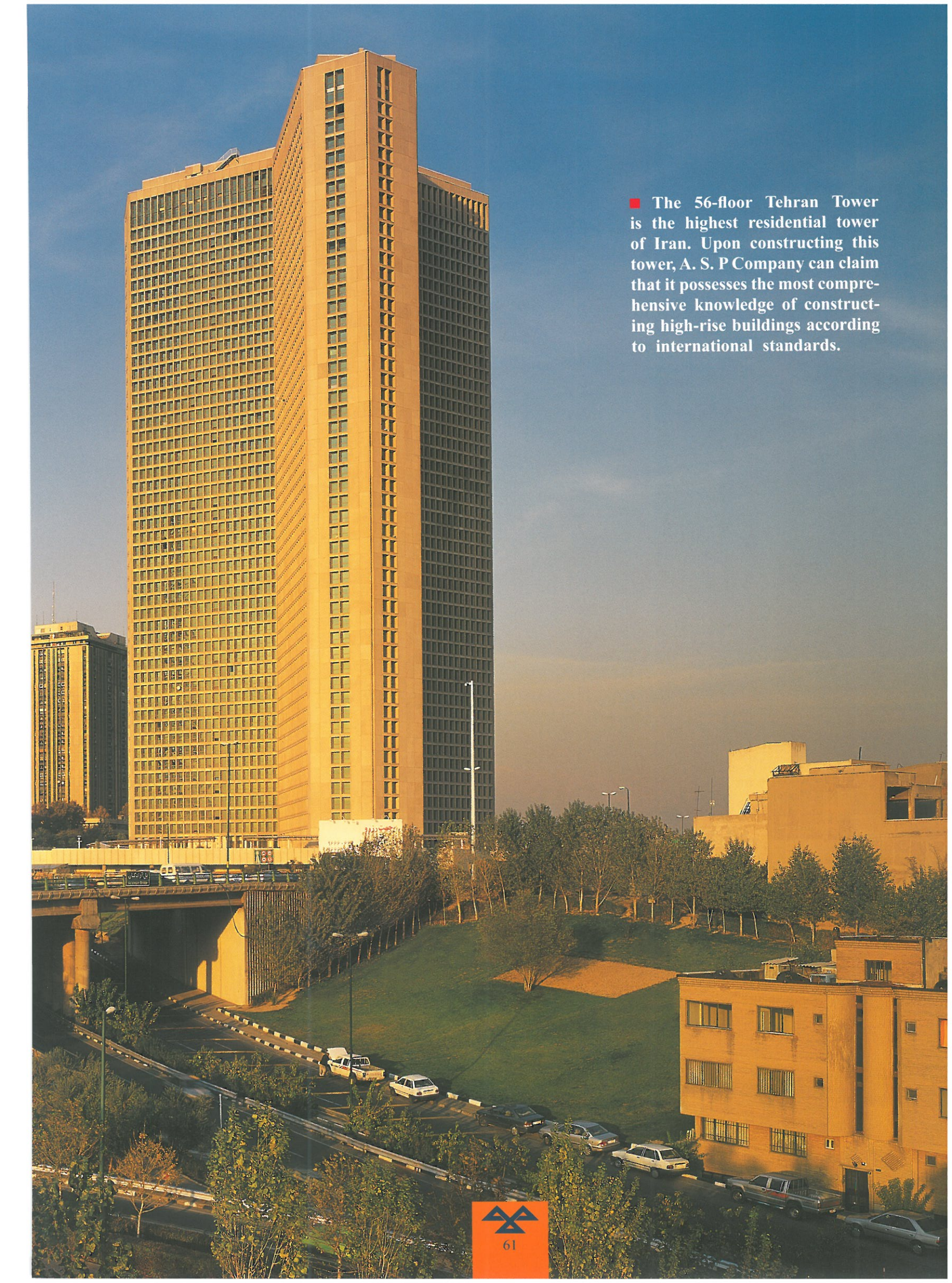
The special structure of the building made up of concrete shear walls, is considered one of the highest concrete structures.

This building has three wings to use light in various directions to be in the best position and the least domination over apartments.

This tower includes:

- 43 suite units
- 172 two bedroom units
- 309 three bedroom units
- 20 four bedroom units
- 11 triplex penthouse units.





■ The 56-floor Tehran Tower is the highest residential tower of Iran. Upon constructing this tower, A. S. P Company can claim that it possesses the most comprehensive knowledge of constructing high-rise buildings according to international standards.





■ Landscaping of Tehran Tower demonstrates an astonishing design and construction and is in harmony with the main building. About 26,000m² of this space is dedicated to green space, fountain, tennis court, and basketball court.

■ Walking route, in the form of a circular porch around the tower, along with children playground in the eastern field complements the landscape.

■ An appropriate space is defined in the periphery of the tower for offering services the residents need.

■ Tower's restaurant and kitchen salon with a capacity for 400 people and an area of 1075 m², can be independently accessed from the ambit and parking and contains independent utility room. Separate covered gymnasiums and pools for men and women as well as dry and steam sauna with in a 1257 m² area, and a three-story parking with a capacity for 1000 automobiles are some of the facilities of the tower.





■ Tehran Tower has been constructed with the best material obtained from the best suppliers all around the world.



- Windows are opened in three modes. All glasses are double-glazed, and sound and thermal proof.
- With various and beautiful patterns, ceilings provides a sound and thermal proof layer between stories.
High- quality wood with oak coating is used in wooden essentials.
- A specific lobby for each wing along with a public lobby as well as special routes for elderly and handicapped traffic are other facilities of the tower.



- For the tranquility of the residents in the highest and most beautiful residential tower of Iran, with a capacity for 15 passenger elevators with 3 m/s speed and 1000 kg weight capacity, as well as 3 freight elevators with a capacity for 1600 kg with 2 m/s speed as well as loading and unloading place has been installed.
- Among other facilities of the tower is a very classy and beautiful conference hall for the meetings of managers with residents.







Restaurant and kitchen salon has a capacity of up to 400 people with an area of 1075 m² with independent access from the ambit and parking and includes an independent utility room.







Separate covered pools for men and women, separate gymnasium salons, as well as dry and steam sauna with an area of 1257 m².





Given the number of floors and units of the international Tehran Tower, we can definitely claim that it is the biggest installed mechanical systems for a residential tower in Iran.





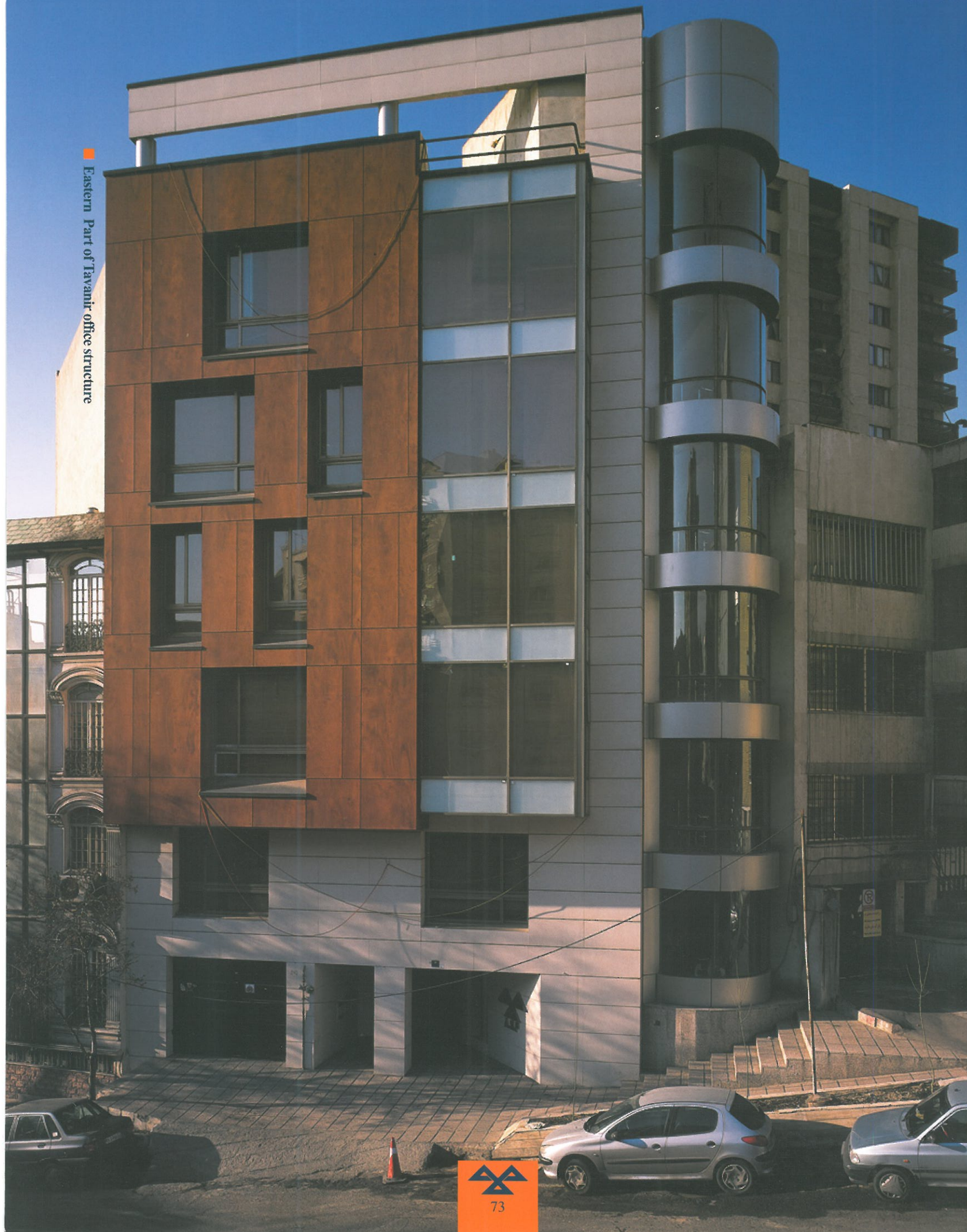


Tavanir office building (Head office)

- Client ————— A. S. P Company
- Consultant ————— Hootan Consultant Engineers
- Location ————— Tehran
- Duration ————— 24 months
- Completion ————— 2008
- Construction cost — 23 billion Rials
- Project type ————— office
- Number of floors — 8 floors
- Land Area ————— 379 m²
- Total Area ————— 1,900 m²
- Project location ——— Tavanir St, Tehran



Eastern Part of Tavanir office structure





Baharan Residential Complex

- Client ————— cooperative
- Consultant ————— Hendeseh NIRA
- Location ————— Tehran
- Duration ————— 24 months
- Completion ————— 2011
- Construction cost — 104 billion Rials
- Project type ————— residential
- Number of floors — 12 floors
- Land Area ————— 2,600 m²
- Total Area ————— 10,700 m²
- Project location ——— Amar St, Deraz-Shib St, Tehran

■ Using modern design and latest technologies in its mechanical systems, Bagh Baharan Tower residential complex is among the high quality projects in northern Tehran.



Besat Residential Complex

- Client ————— International Construction Development Company
- Consultant ————— Dowran Shahr Co.
- Location ————— Tehran
- Duration ————— 30 months
- Completion ————— 2015
- Construction cost ————— 375.164 billion Rials
- Project type ————— residential, office
- Number of floors ————— 7 blocks, 12 floors each
- Area ————— 9,600 m²
- Net area ————— 34,000 m²
- Total area ————— 54,000 m²
- Project location ————— Besat St, Besat Highway, Tehran

■ Pre-stressed, post-tensioned concrete slabs system has been employed in structure design of this project. Any of the seven blocks of the complex have their own independent utility room.

This complex includes welfare facilities such as sports spaces, disabled specific units, and commercial units with appropriate price for middle-class people of Tehran city.

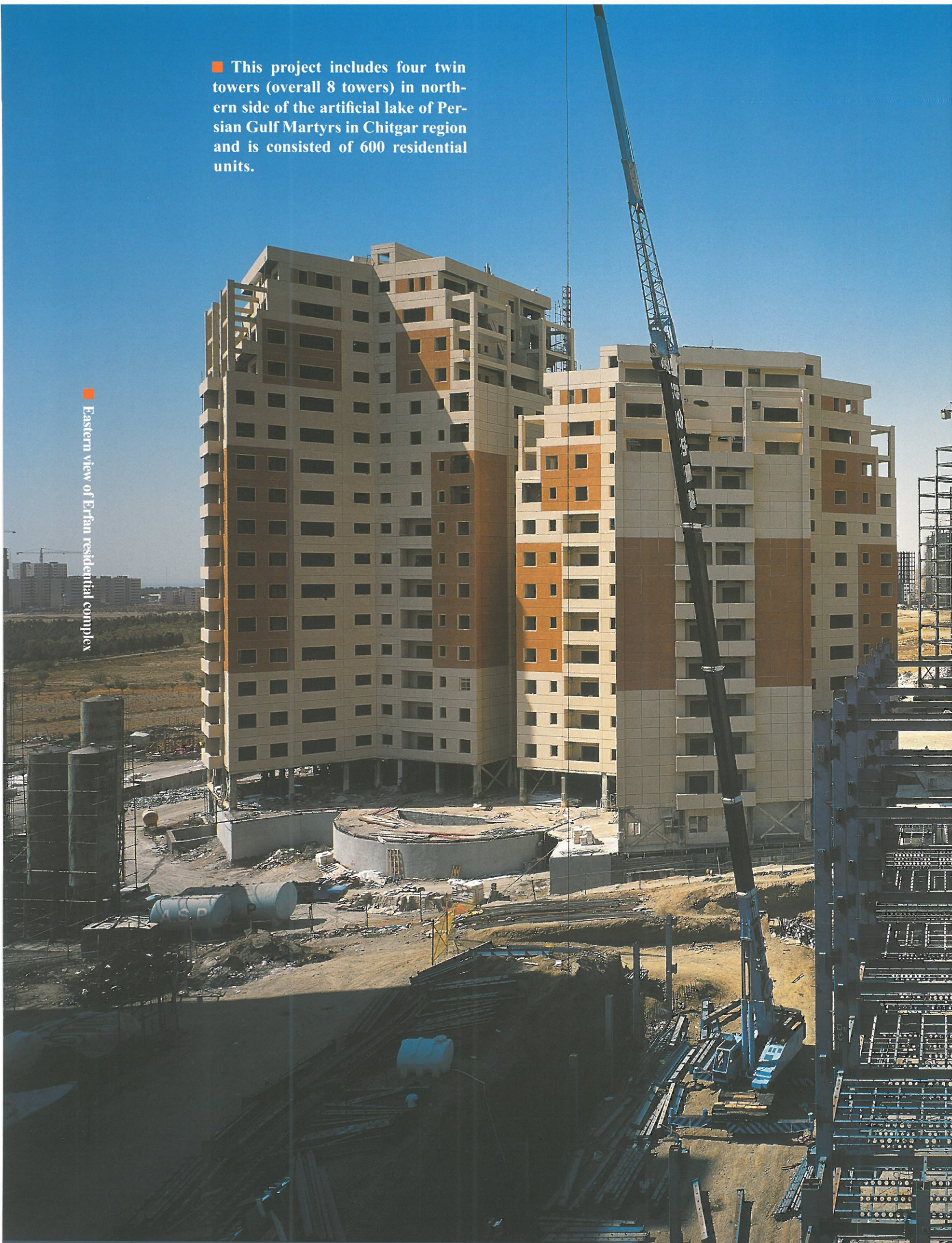


Erfan Residential Complex

- Client — International Construction Development Company
- Consultant — Peyman Ghadir Consulting Engineers Co.
- Location — Tehran
- Duration — 48 months
- Completion — 2011
- Construction cost — 780 billion Rials
- Project type — residential
- Number of floors — 16 and 12 floors
- Land Area — 30,000 m²
- Total Area — 135,000 m²
- Project location — opposite shahrak- e Shahid Bagheri, West Hemmat highway, Tehran

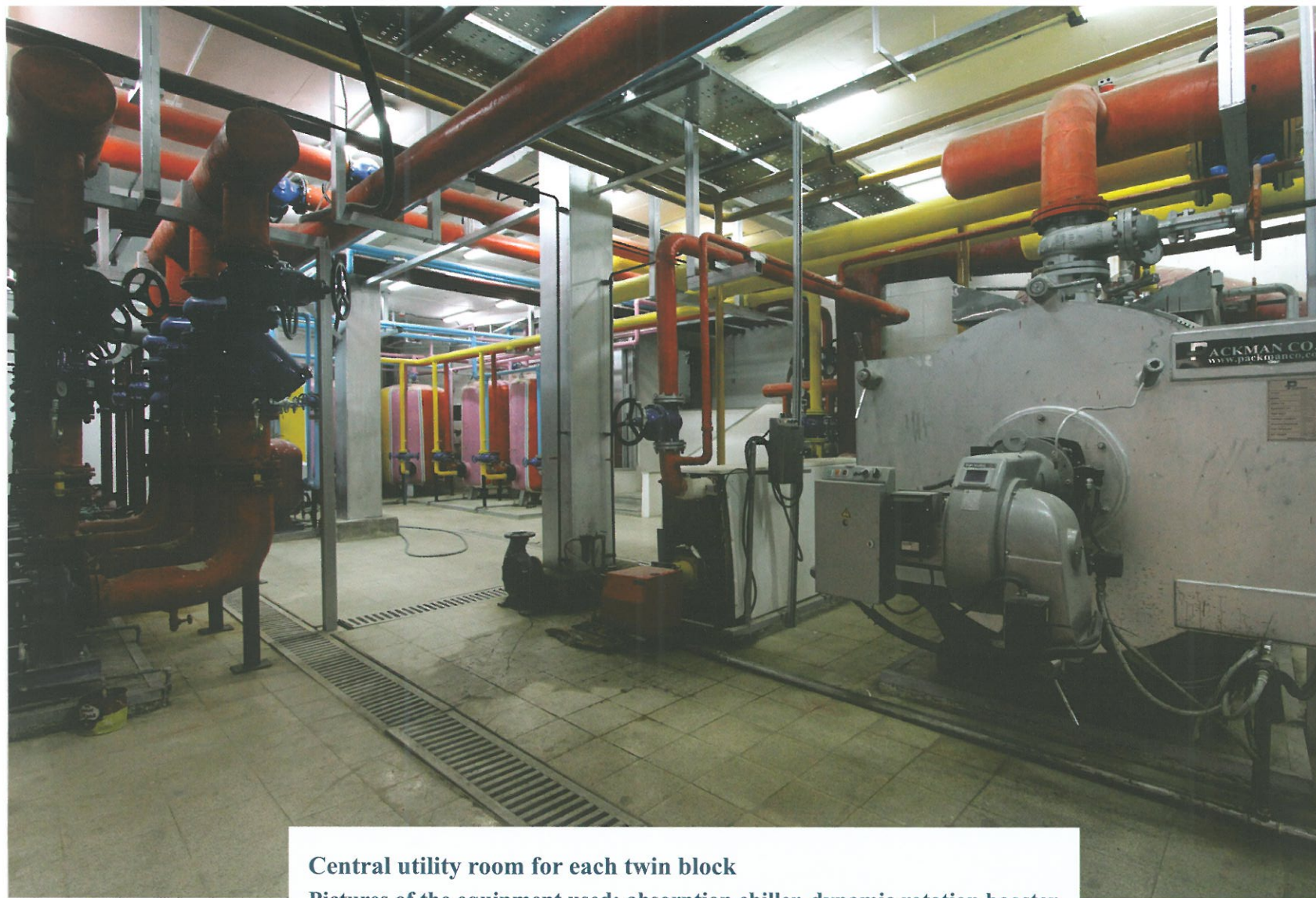
■ This project includes four twin towers (overall 8 towers) in northern side of the artificial lake of Persian Gulf Martyrs in Chitgar region and is consisted of 600 residential units.

■ Eastern view of Erfan residential complex



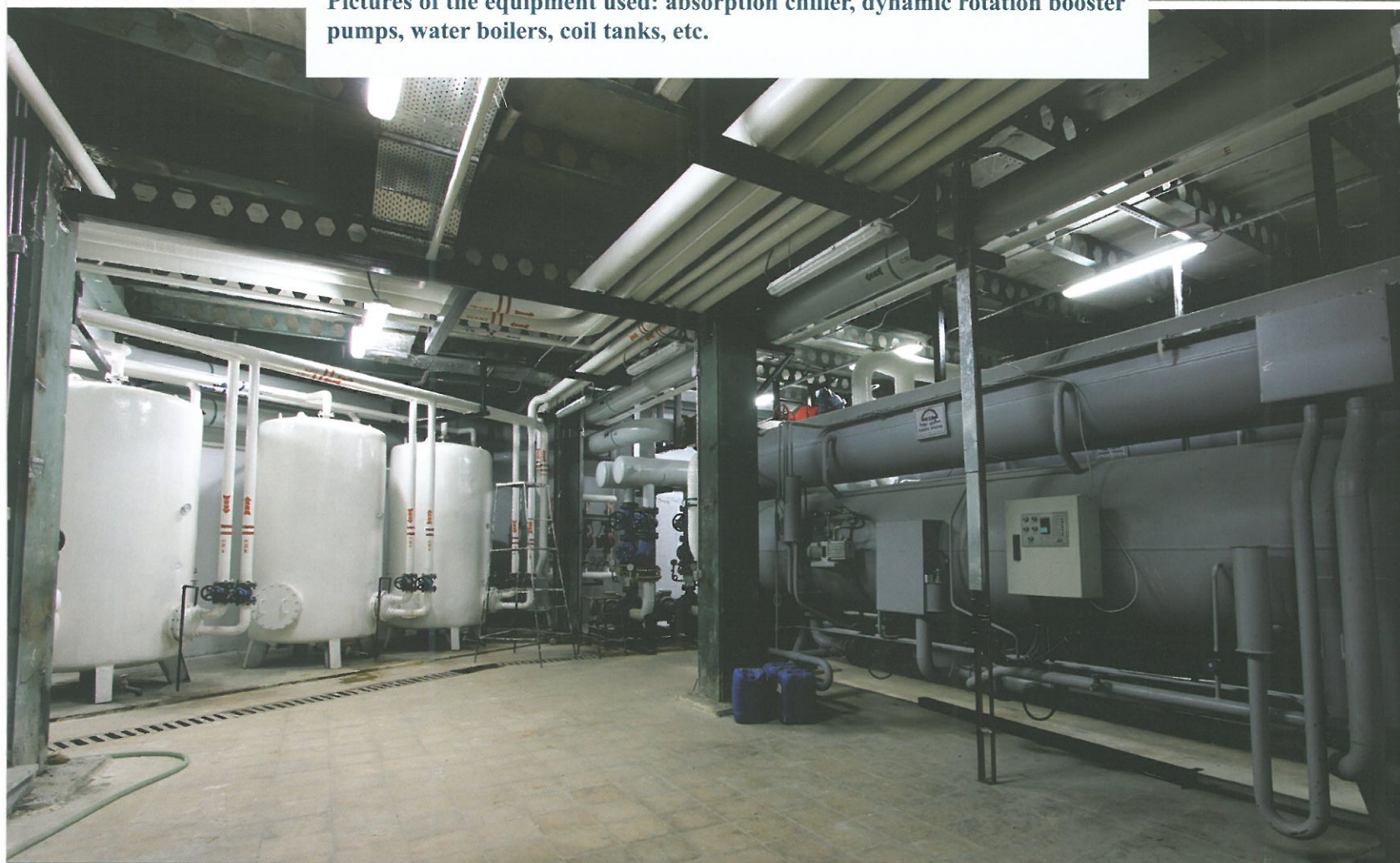


■ Central yard in Iranian-Islamic architecture that acts as the organizing and uniting factor of the volumes in adjacent public spaces in the direction of main axes of the site.



Central utility room for each twin block

Pictures of the equipment used: absorption chiller, dynamic rotation booster pumps, water boilers, coil tanks, etc.





Shahryar A. S. P 2000- unit residential sub-div

- Client ————— A. S. P Company with
the cooperation of private sector
- Consultant ————— Armanshahr Consultants
- Location ————— Tehran- Malard
- Completion ————— 1st phase: 2014 (1540 units); 2nd phase: under construction (440 units)
- Construction cost ——— 1st phase: 1,062.675 billion Rials + 2nd phase: 255.183 billion Rials;
total: 1,317.858 billion Rials
- Project type ————— residential, commercial
- Number of floors ——— 6 floors
- Land Area ————— 300,000 m²
- Total Area ————— 242,000 m²
- Project location ——— opposite of Ja'farie Sub-Div, Malard, Shahryar Road





Creating 128,000 m² of green space in the form of children playground, health parks, and landscapes





■ Shahryar 2000 - unit residential suburb including one hundred 20-unit blocks and has been executed according to construction standards and thinking about the welfare facilities required by residents. At its first phase, it has been designed and constructed in the form of Mehr Dwelling to be owned by middle-class and low-class income people. Each block consists of 6 floors equipped with an elevator and roofed parking lots as well as double-glazed UPVC windows. Latest and prevalent construction technologies have been employed to construct it. Cement façade has been used in all facades of the complex.





Moreover, for the welfare of the residents, 80 commercial units in various entry and central parts of the suburb with the required functions have been designed, part of which is under exploitation and some others are under construction. Educational, cultural, treatment, sports, and religious (mosque) spaces inside the project with a capacity proportionate to the suburb population have been designed and are under construction.





Elahieh Residential Complex

- Client ————— A. S. P Company with the cooperation of private sector
- Consultant ————— Hamkaran Memari and Sazeh Consultants
- Location ————— Tehran
- Duration ————— 26 months
- Completion ————— 2015
- Construction cost ————— 400 billion Rials
- Project type ————— residential
- Number of floors ————— 14 floors
- Land Area ————— 3,000 m²
- Total Area ————— 12,600 m²
- Project location ————— Banooyi Alley, Istanbul St, Elahieh



Under construction projects:

■ The A. S. P Company has managed to construct more than 1,000,000 m² area with the highest construction quality possible and has 500,000 m² under construction. These projects are among the best and most valuable buildings of Iran.



Sa'di Shiraz Commercial- Recreational Complex

Client	International Construction Development Co.
Consultant	Peyman-e-Ghadir Consulting Engineers
Location	Shiraz
Construction duration	30- months schedule
Completion	under construction
Construction cost	950 billion Rials
Construction method	management contract
Project type	commercial, recreational
Number of floors	12 floors
Land Area	6,000 m ²
Total Area	55,000 m ²
Project location	Opposite of Mellat Bank, Afif-Abad St., Shiraz



■ Excavation of 17m (4 floors) and soil stabilization operation using a combination of nailing, anchorage, and retaining truss has been implemented. Structure of Sa'di Shiraz is made of steel framing with bolt and screw connections besides truss structure. More than 11,000 tons of steel has been used for this building.



■ This commercial complex includes 270 commercial units with a pleasing and beautiful design and observing all modern design principles. It is situated in Afif-Abad neighborhood of Shiraz. Moreover, its recreational space includes food court, coffee shop, children amusement park, two-dimensional and four-dimensional cinema, and multi-purpose salon. In order to meet the needs of customers and users, apart from the parking of the main building, the accession building near the main structure in five floors with parking and utility room usage is under construction, which 450 parking units for Sa'di Shiraz project have been considered. The façade is dry ceramic; incorporated into the façade are two LED screens to introduce active commercial units and advertisements. The highest and latest international standards as well as the latest firefighting rules and regulations have been considered. For air conditioning and discharging the smoke in parking, centrifuge jet fan and smoke curtain systems have been used.





Urbanization Preparation of Roshdih Servicing, Sports, Tourism Complex

Client	Baghmisheh House Construction Company
Consultant	Hajmin Consulting Engineers
Location	Tabriz
Construction duration	75 months (1 st and 2 nd Phases)
Completion	predicted to be end of 2016
Construction cost	170 billion Rials
Construction method	contracting, fixed price
Project type	Entertainment, Servicing, Sports, Tourism; Urbanization preparation
Land Area	1st phase: 47 hectares; 2nd phase: 30 hectares
Total Area	55,000 m ²
Project location	Shahrak 'e' Roshdih, Tabriz



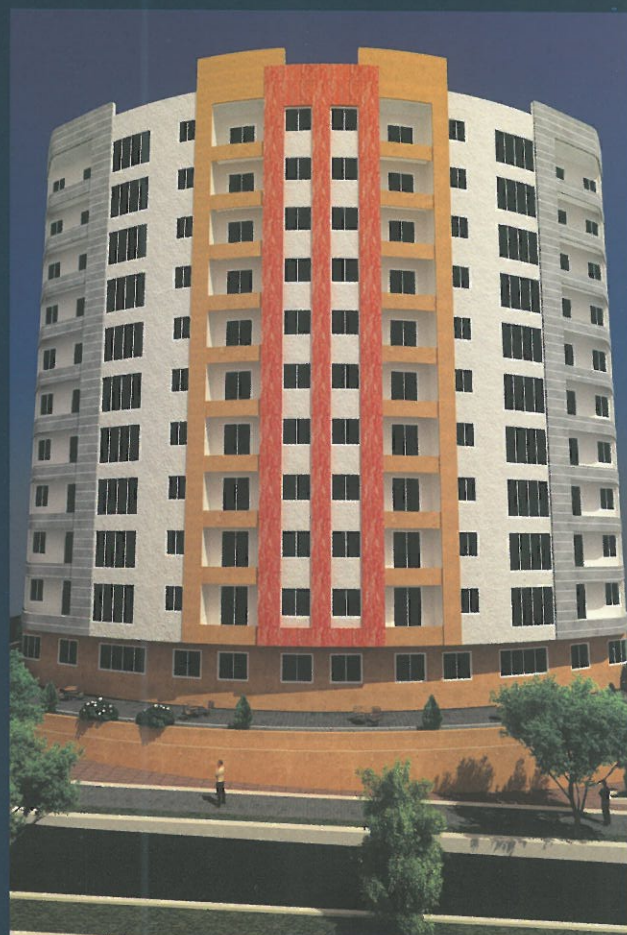


■ Shahrak 'e' Roshdieh recreational- tourism will be constructed in heights of Baghmisheh which benefits from pleasant weather in a 30 hectare land with public urban usage in order to attract tourists. This project with a total area of 77 hectares in the mountains of Tabriz city has been prepared.



Roshdieh Residential Project of Tabriz

Client	A.S.P Company with the cooperation of private sector
Consultant	Tel-tav Consulting Engineers
Location	Tabriz
Construction duration	39 months (according to the schedule)
Completion	under construction
Construction cost	335 billion Rials
Construction method	EPCF
Project type	Residential
Number of floors	2 Towers, 13 floors each
Land Area	4,600 m ²
Total Area	23,000 m ²
Project location	Shahrak 'e' Roshdieh, Tabriz





■ Two 13- floor residential towers have been designed in the good-weathered region of Roshdieh and by paying attention to indigenous needs are under construction. The façade is a beautiful combination of stone and washed concrete and its peripheral arcs distinguish it from other buildings.





Fereshteh and Elahieh Towers in Morvarid-Shahr Residential

Client	A. S. P Company with the cooperation of private sector
Consultant	Tazand Consulting Engineers
Location	Tehran
Construction duration	39 months according to the schedule
Completion	under construction
Construction cost	1,300 billion Rials
Construction method	EPCF
Project type	Residential
Number of floors	two towers, 31- floor each
Land Area	3,400 m ²
Total Area	67,000 m ²
Project location	Morvarid-Shahr, West Hemmat (Shahid-Kharazi) Highway, Tehran

Elahieh and Fereshteh 31- floor towers are situated in District 22 of Tehran City and can be accessed from Shahid-Kharazi (West Shahid-Hemat) and Shahid-Hakim highways. The steel skeleton of towers' structure is made up of circumferential bending moment frame with metal deck slabs, which has a high degree of strength and ductility and also has maximum flexibility in interior architecture.

Each tower includes 150 residential units as well as 3 elevators, sports and children playground spaces, cultural salon, conference hall, helipad, roofed parking (166 units) and storehouse (150 units) in the first to the fifth basement floors. It enjoys beautiful and modern architecture. Moreover, it is equipped with modern installations and has been constructed according to the best standards.





Pasargad Commercial, Office, and Residential complex

Client	A. S. P Company with the cooperation of private sector
Consultant	Sharestan Consulting Engineers
Location	Tehran
Construction duration	30 months according to the schedule
Completion	under construction
Construction cost	1,112 billion Rials
Construction method	EPCF
Project type	Residential, Office, Commercial
Number of floors	Six blocks, 5 or 13 floors each
Land Area	20,000 m ²
Total Area	130,000 m ²
Project location	Khavaran junction, Imam Ali highway, Tehran

■ Pasargad project is to be constructed in the old areas of Tehran in a region consists of many joined individual blocks.

The reinforced concrete structure of this project is composed of six 5 and 13-floor blocks (in an alternative order) as well as concrete shear wall and Cobiax slabs.

The project consists of 195 commercial units in ground and underground floors as well as 84 office units and 357 residential units in upper floors.

Fourth to second underground floors have been dedicated to parking, storehouse, and utility room. Ground floor and underground floor as well as basement floors can be accessed from all blocks.









■ One of the most serious concerns is to use stable and green architecture consideration in project design, which completely corresponds to the national policies in construction field. By analyzing the current status of construction in Shemshak City, the design of Shemshak Tourism Center project based on sustainable principles can be a turning point in aligning current construction procedure in this city with this new policy. The mid- term and long- term benefits of undertaking this project with the above characteristics in correcting existing energy consumption trends and protecting the environment of Shemshak city are among the points that distinguish this project from other projects in this city.

Shemshak 2 Touristic-Recreational complex

Client	A. S. P Company
Consultant	Naqsh Paidar Consulting Engineers
Location	Tehran- Shemshak
Construction duration	under design
Completion	under design
Construction cost	990 billion Rials (primary estimation)
Construction method	EPCF
Project type	Residential, Recreational
Number of floors	15 floors
Land Area	38,000 m ²
Total Area	95,000 m ²
Project location	Shemshak- Tehran





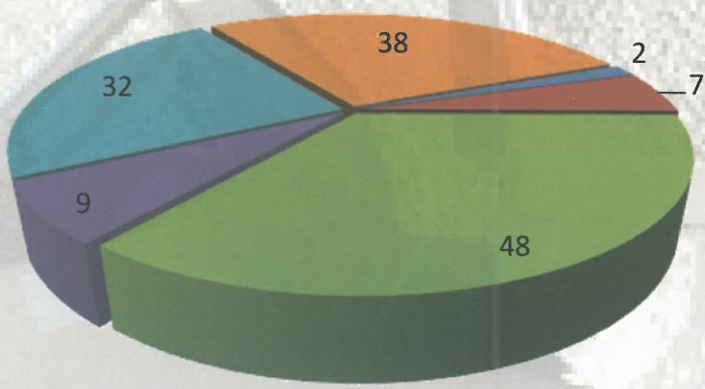
■ For a project to be carried out with the best performance possible, employing the best and experienced engineering personnel as well execution teams and technicians, the latest and most appropriate construction machineries and equipment should be used.

A.S.P. Company with more than 45 years of experience has equipped its engineers and construction site agents with the most modern construction machineries and equipment.

Some available machineries and equipment are listed as follows:

No.	Description	Total number
1	Tower crane	12
2	Batching plant	3
3	Cement silo (100 tons)	17
4	Bulldozer and Grader	4
5	Truck mixer	4
6	Excavator	2
7	Loader and mini-loader	5
8	Dump truck	7
9	Climber	2
10	Mobile & Overhead Crane from 5 to 30 ton	4
11	Air compressor	2
12	Picor Rammer	1
13	Mobile Power Generator	6
14	Dumper	5
15	Hydraulic Steel bar Cutter & Bender	11
16	Alimak	5
17	Surveying Devices	11
18	Welding Rectifier and Power Generator	20
19	Boiler	3
20	Vibratory Roller	5
21	Light vehicles and Lorries	17
22	Fork lift Truck	4
23	Concrete Pump	2
24	Placing boom	2





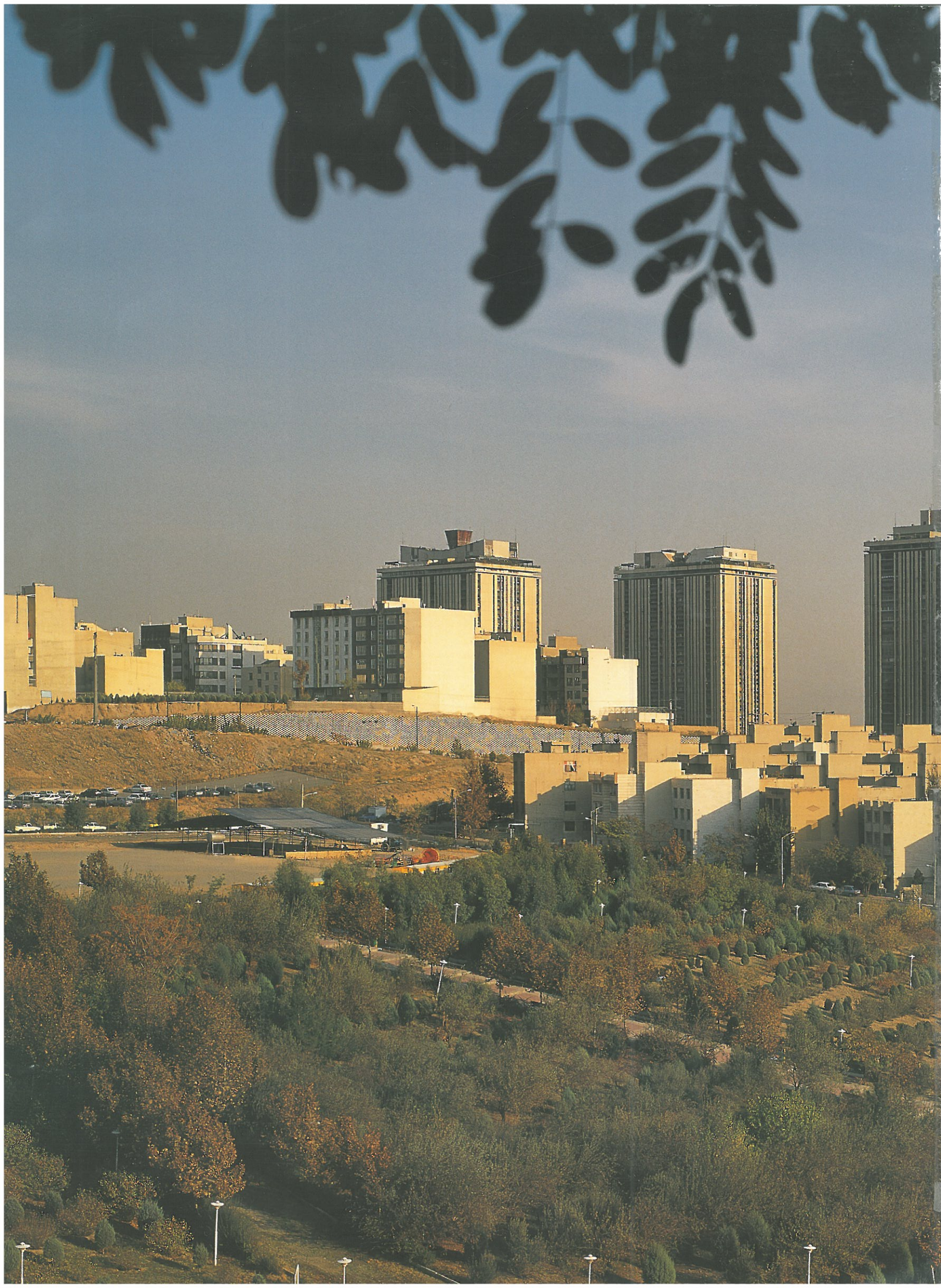
- Ph. D
- Master Degree
- Bachelor of Science
- Technician
- High School Graduate
- Labours and Foremen

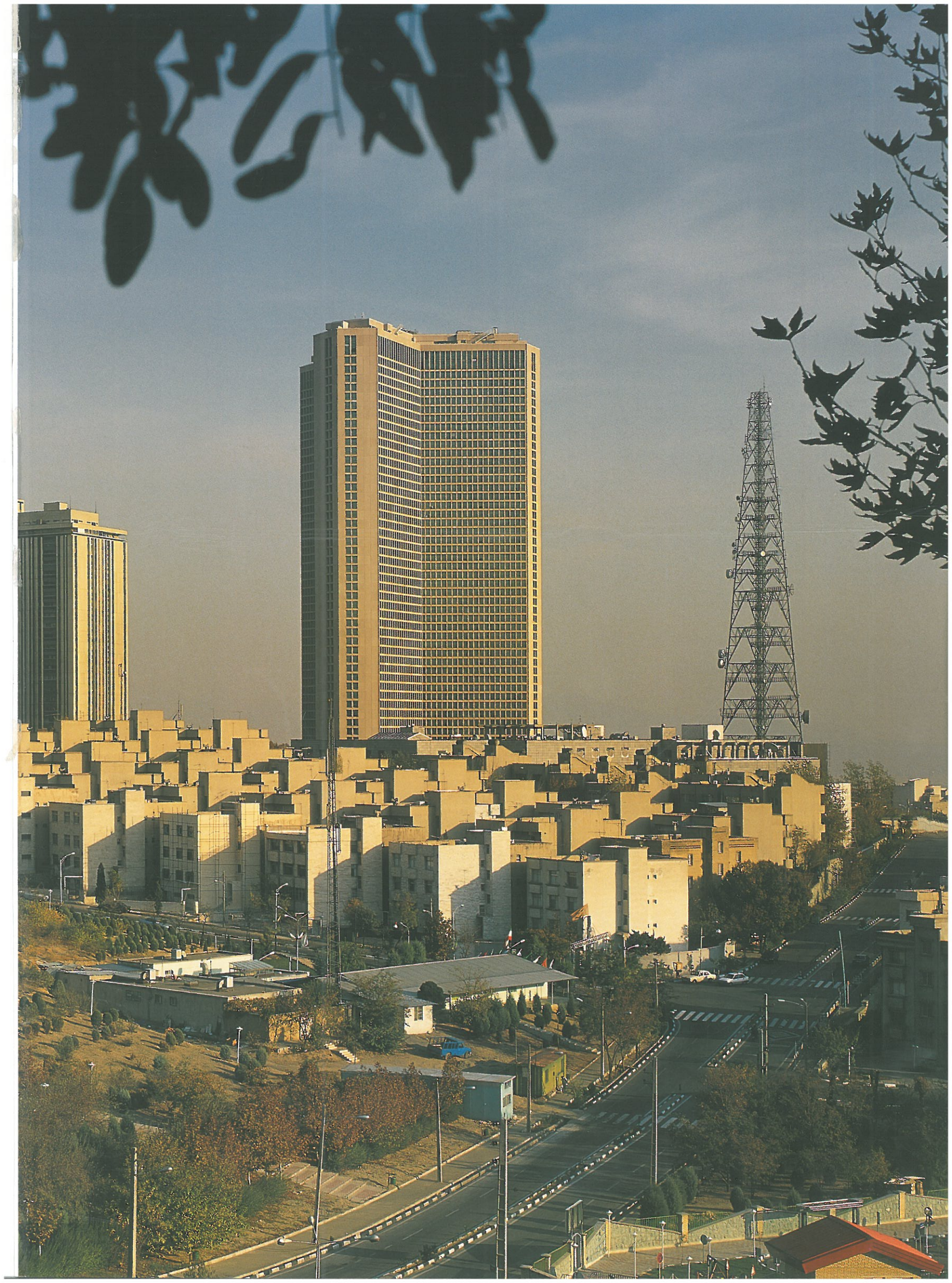
■ Having a permanent engineering and quality control team composed of more than 40 engineers of various and related fields, A.S.P Company has always had the potential to fulfill the requirements of different projects. It uses the best and most capable engineering experts in its executive work proportionate to status and volume of projects.

Permanent members of the company table

Row	Engineers	Number	Description
1	Civil engineers	24	Including one Geotechnic Engineering P.H.D, two structure and Earthquake Engineering Post-graduates, three Construction engineering and Management Postgraduates
2	Architectural engineers	8	Including two Postgraduates
3	Mechanical and utility installations engineers	5	Including one Postgraduate
4	Electricity and instrumentation engineers	3	—
5	Surveying engineers	2	—









A.S.P.

Construction co.

No.16, Shahid Abbaspour (Tavanir) St.,
Vali-e-Asr Ave., Tehran - 1434864371 - Iran

Tel : (+9821) 88770852 - 88770777

Fax : (+9821) 88776601

www.asp-co.ir

info@asp-co.ir

